

Before running a LAMS Class

- ✦ Preview the LAMS sequence after you have created it. To do this, click on Preview in the top menu bar. Wait for a few seconds and you will be taken to the screen that the students will see. If you are still waiting after a few seconds you may need to de-activate the pop-up window blocker on your Internet Browser.

Check:

- instructions and spelling;
- that activities are sequenced correctly;
- that resources are accessible and download as expected.

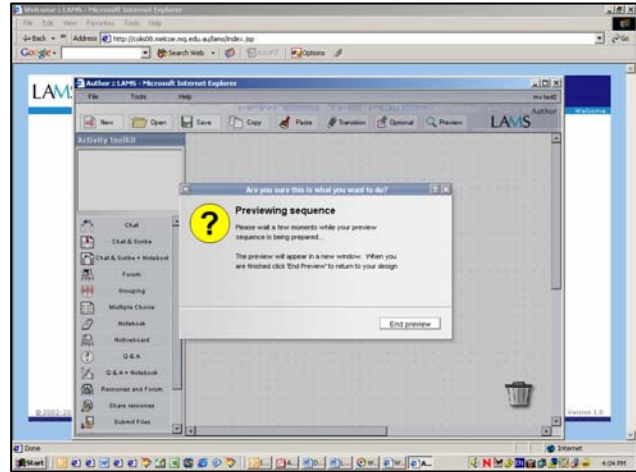


Figure 1: Preview screen in author mode

- ✦ Enrol students into the system. See your system administrator if necessary.
- ✦ Start the sequence via the Monitor interface (Assign Class and select Start).
- ✦ Check the lab, classroom or venue where LAMS will be used. In particular check that:
 - The operating system meets minimum system requirements (Windows 2000 or XP, or Mac OS X 10.2 or above; MS Internet Explorer v. 5.x or above)
 - The Flash plugin is installed (version 7 or above);
 - The URL to your server brings up the log in page to LAMS;
 - The sequences display in the learner view;
 - That chat operates - if required.
- ✦ If users are to work from home on LAMS check they can meet the minimum system requirements to run LAMS and have a LAMS 'Learner's Guide'.
- ✦ Check you have access to projection facilities if you want to display the LAMS sequence to the whole class.
- ✦ Prepare a short orientation for students to LAMS and allow time for questions on process during the LAMS session.