

## Renaturation of forrest in Kampinos National Park

Erasmus+ - Umweltfreundliches Europa die Zukunft beginnt jetzt.

Kampinos walk Poland Mobilität – 25-28.04.2023

Group 1

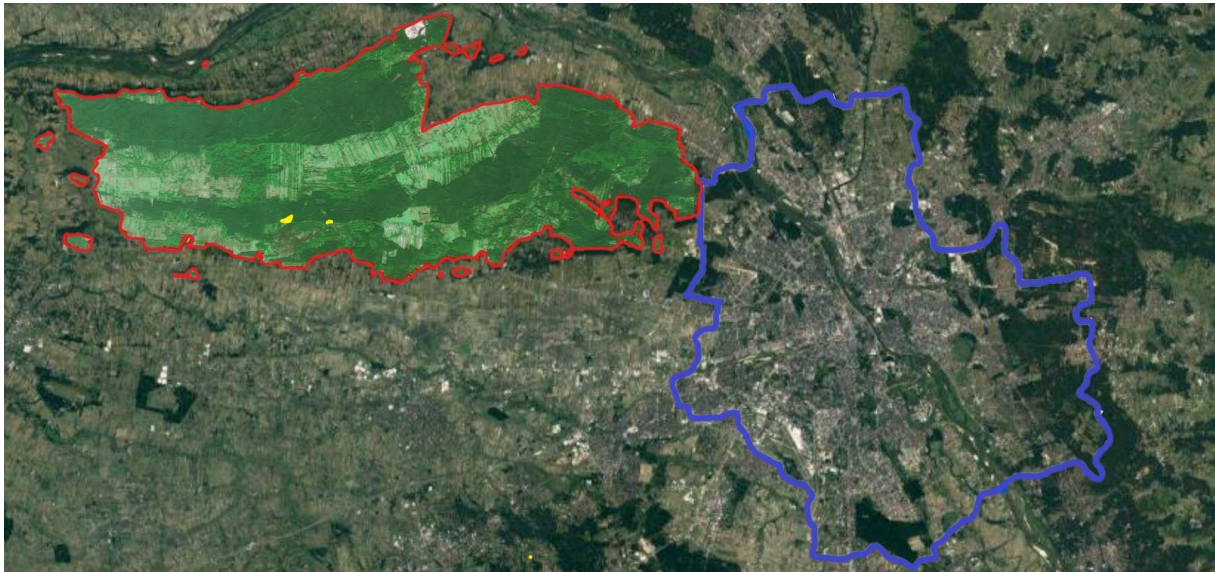


1. complete the information given on the route by the guide - please do not use google😊



Kampinos National Park Surface Area	.....
Yellowstone National Park Surface Area	.....
Warsaw Area	.....

2. take 5 photos of each habitat in the strict protection area Zamczysko and Nart (yellow zones on the map).



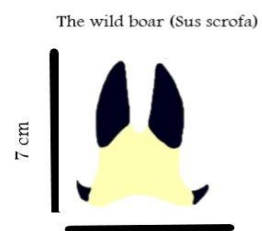
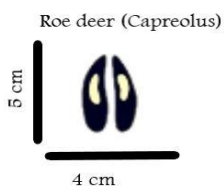
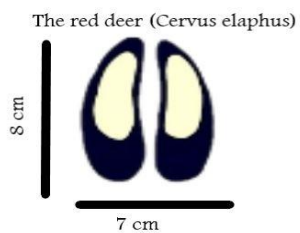
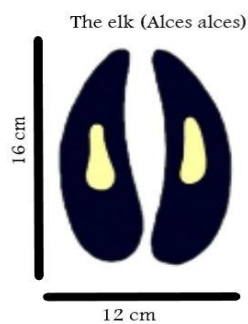
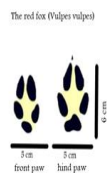
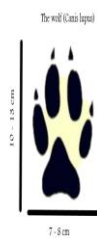
3. try to find this plant while staying on the trail

*Spinulum annotinum* known as interrupted club-moss or stiff clubmoss. It occurs throughout Poland, but is quite a rare plant. In recent years, the number of sites where it occurs has been decreasing. Placed on the Polish red list in the NT category (near threatened). It grows mainly in moist forests, in places overgrown with mosses.

Task: find this plant, take a photo of the habitat and mark the location on the map.



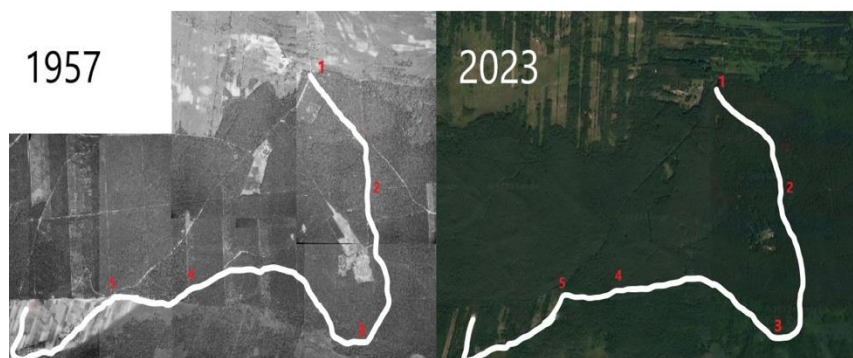
4. observations some animal tracks mark and put on the map



Wolf	Fox	Badger	Elk	Red deer	Roe deer	Wild boar

5.measure 30 pines and calculate the average of their circumference - section 1 – 2

6: find the thickest hornbeam on your route, measure its circumference and ponit on the map



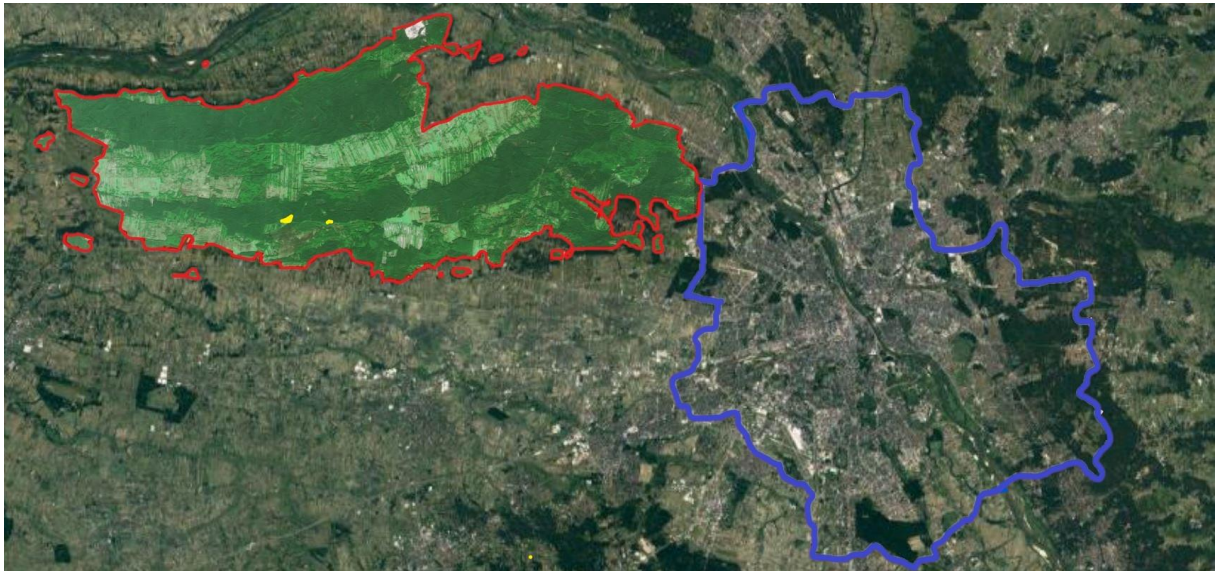
## Group 2

1. complete the information given on the route by the guide - please do not use google😊

The image shows a map of Poland with three specific regions highlighted. A large area in the west is colored green, a small area in the north is also green, and an area in the southeast is colored blue.

Kampinos National Park Surface Area .....
Yellowstone National Park Surface Area.....
Warsaw Area .....

2. take 5 photos of each habitat in the strict protection area Zamczysko and Nart (yellow zones on the map).



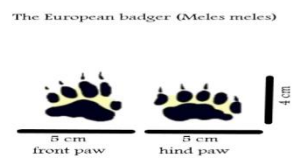
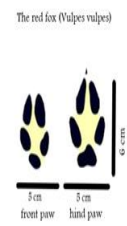
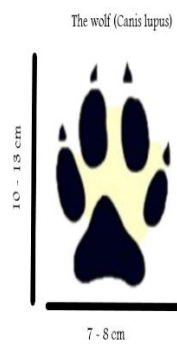
3. try to find this bird while staying on the trail

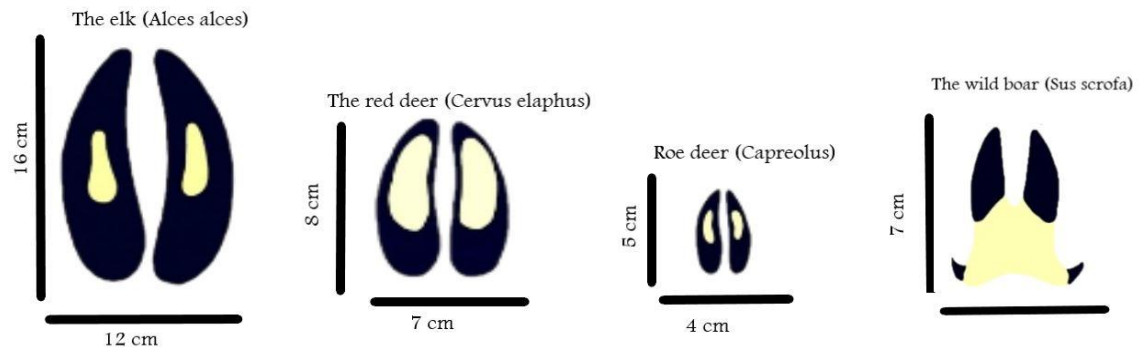
The wood nuthatch (*Sitta europaea*) is a small passerine bird found throughout the Palearctic and in Europe. Its preferred habitat is mature deciduous or mixed woodland with large, old trees, preferably oak. Pairs hold permanent territories, and nest in tree holes, usually old woodpecker nests, but sometimes natural cavities.



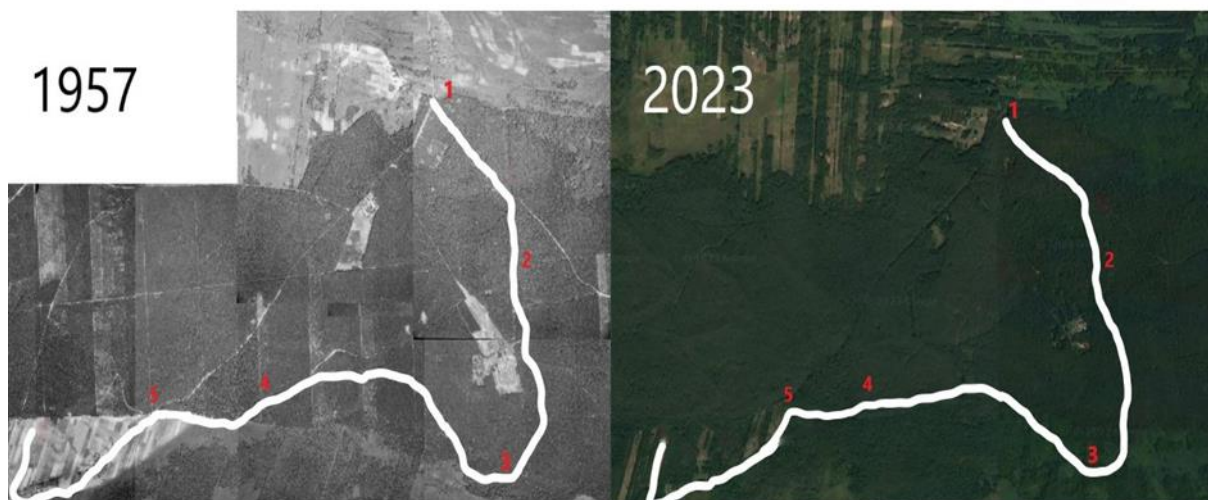


4. observations some animal tracks mark and put on the map





Wolf	Fox	Badger	Elk	Red deer	Roe deer	Wild boar



5. count fallen and broken large trees in sight - section 2-3

6. find the thickest oak on your route and measure its circumference and ponit on the map



*Quercus petraea*, the sessile oak

*Quercus robur*, the pedunculate oak

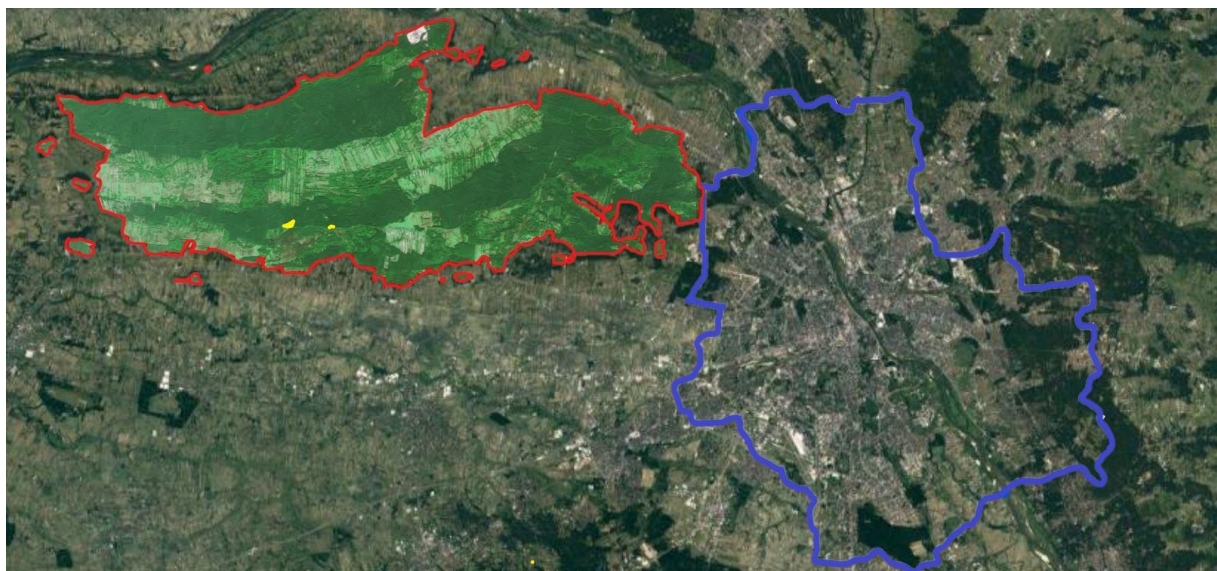
Group 3

1. complete the information given on the route by the guide - please do not use google 😊





2. take 5 photos of each habitat in the strict protection area Zamczysko and Nart (yellow zones on the map).



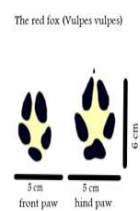
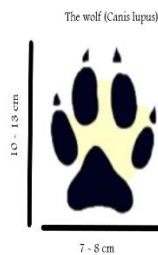
3. try to find this plant while staying on the trail

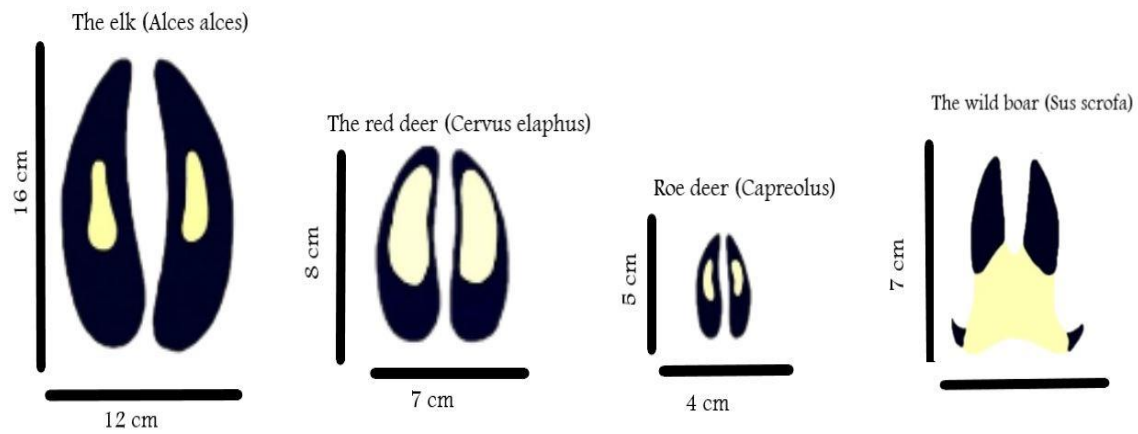
*Spinulum annotinum* known as interrupted club-moss or stiff clubmoss. It occurs throughout Poland, but is quite a rare plant. In recent years, the number of sites where it occurs has been decreasing. Placed on the Polish red list in the NT category (near threatened). It grows mainly in moist forests, in places overgrown with mosses.

Task: find this plant, take a photo of the habitat and mark the location on the map.



4. observations some animal tracks mark and put on the map



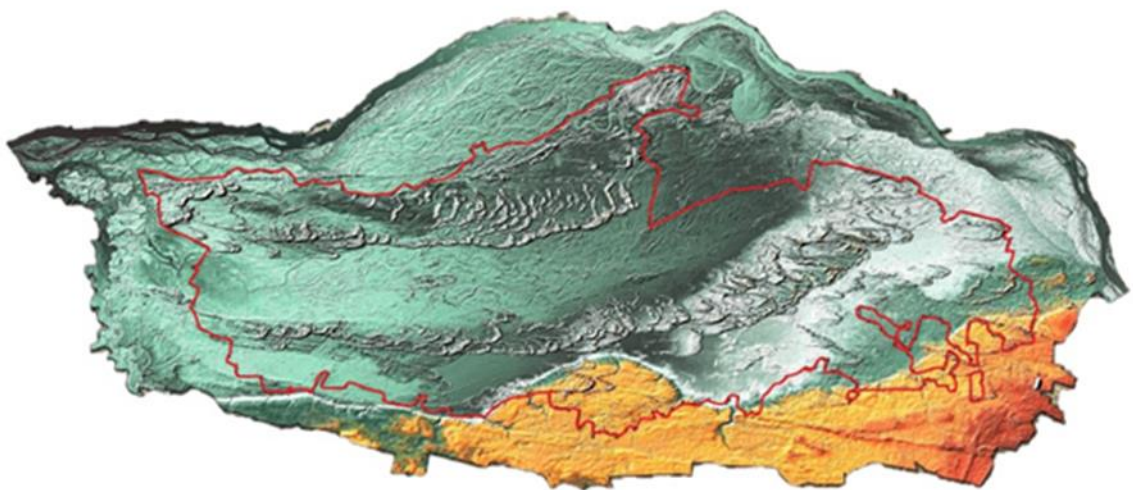


Wolf	Fox	Badger	Elk	Red deer	Roe deer	Wild boar



5. measure 30 pines and calculate the average of their circumference - section 3- 4

6. mark on the map sections of the trail leading through the dune areas



Group 4

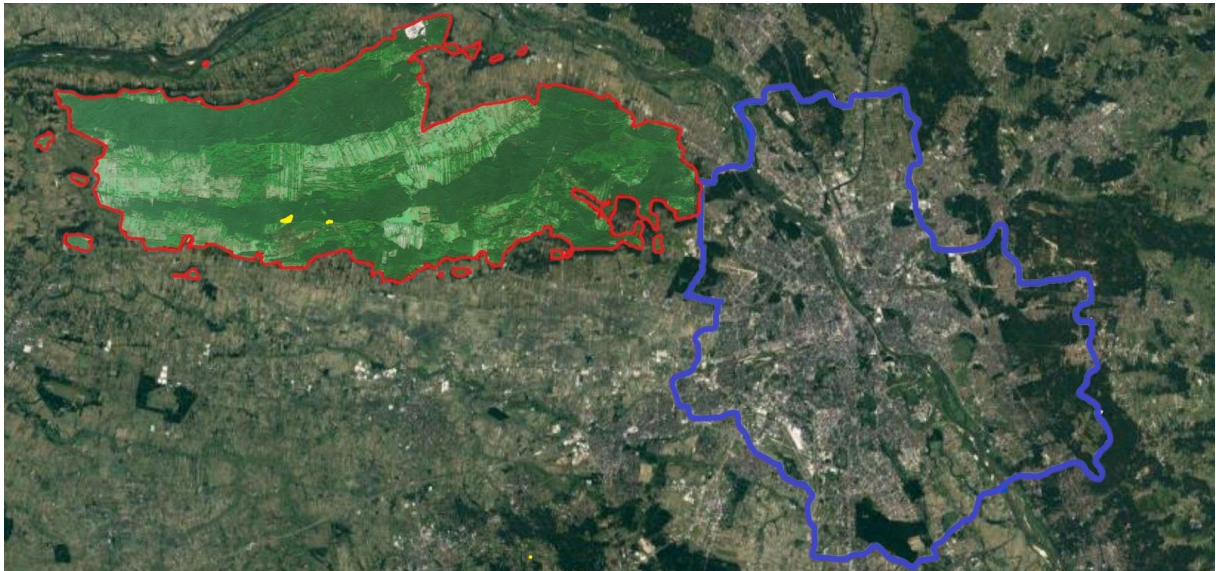
1. complete the information given on the route by the guide - please do not use google☺



Kampinos National Park Surface Area .....
Yellowstone National Park Surface Area.....
Warsaw Area .....



2. take 5 photos of each habitat in the strict protection area Zamczysko and Nart (yellow zones on the map).



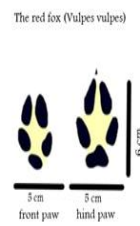
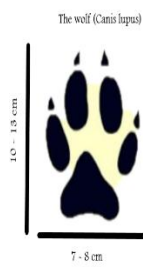
3. try to find this bird while staying on the trail

The wood nuthatch (*Sitta europaea*) is a small passerine bird found throughout the Palearctic and in Europe. Its preferred habitat is mature deciduous or mixed woodland with large, old trees, preferably oak. Pairs hold permanent territories, and nest in tree holes, usually old woodpecker nests, but sometimes natural cavities.

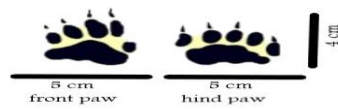


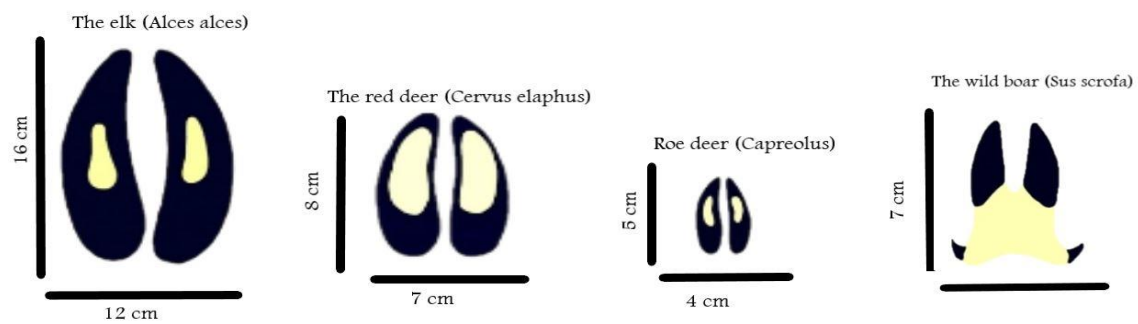


4. observations some animal tracks mark and put on the map

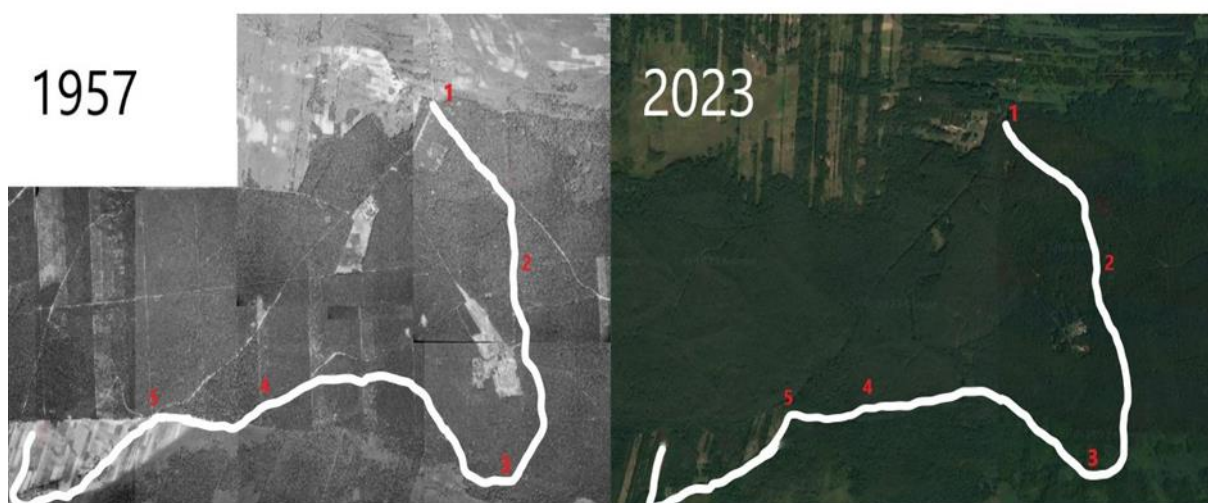


The European badger (*Meles meles*)



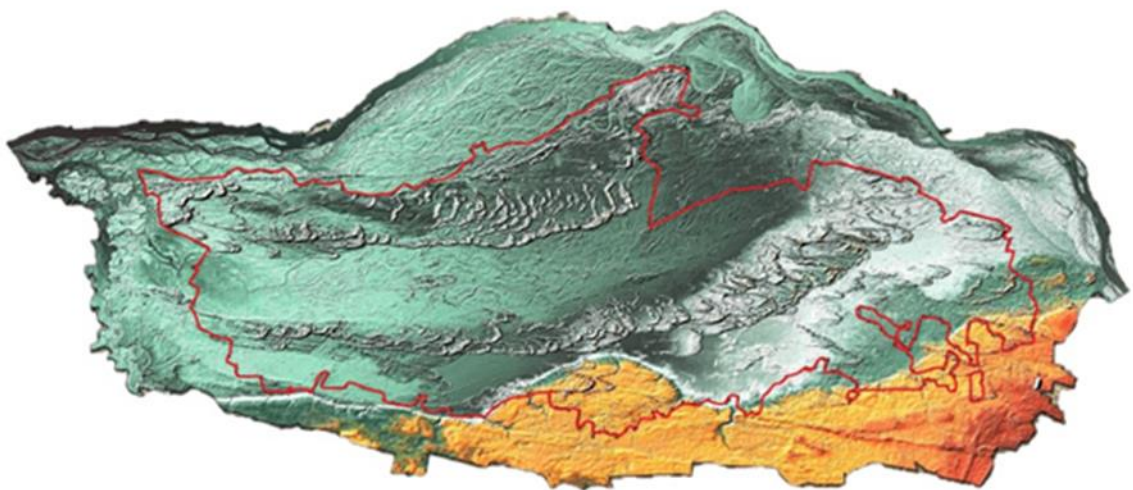


Wolf	Fox	Badger	Elk	Red deer	Roe deer	Wild boar



5. count fallen and broken large trees in sight section 4-5

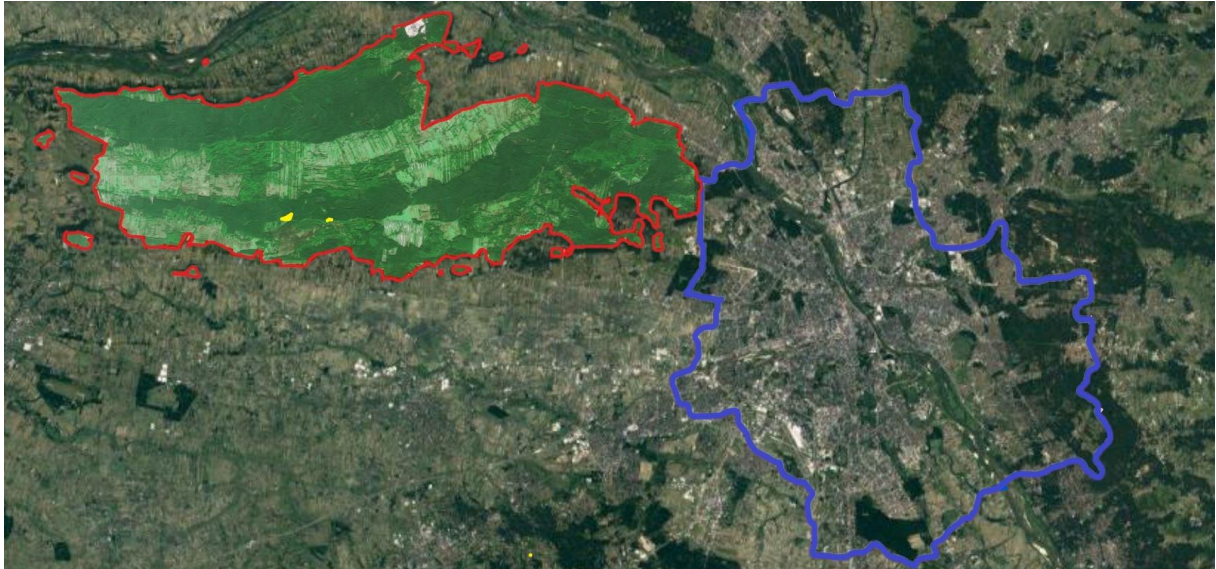
6. mark on the map sections of the trail leading through the wetlands areas



1. complete the information given on the route by the guide - please do not use google☺



2. take 5 photos of each habitat in the strict protection area Zamczysko and Nart (yellow zones on the map).

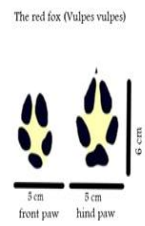
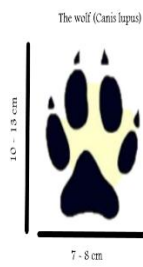


3. try to find this bird while staying on the trail

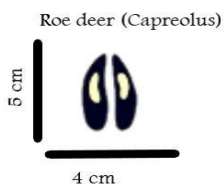
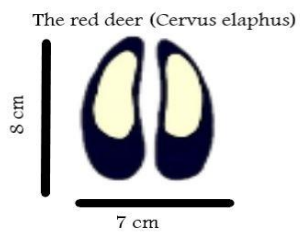
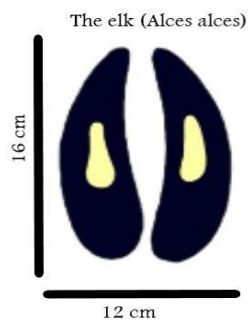
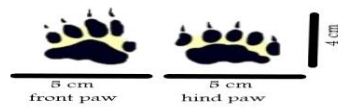
The wood nuthatch (*Sitta europaea*) is a small passerine bird found throughout the Palearctic and in Europe. Its preferred habitat is mature deciduous or mixed woodland with large, old trees, preferably oak. Pairs hold permanent territories, and nest in tree holes, usually old woodpecker nests, but sometimes natural cavities.



4. observations some animal tracks mark and put on the map

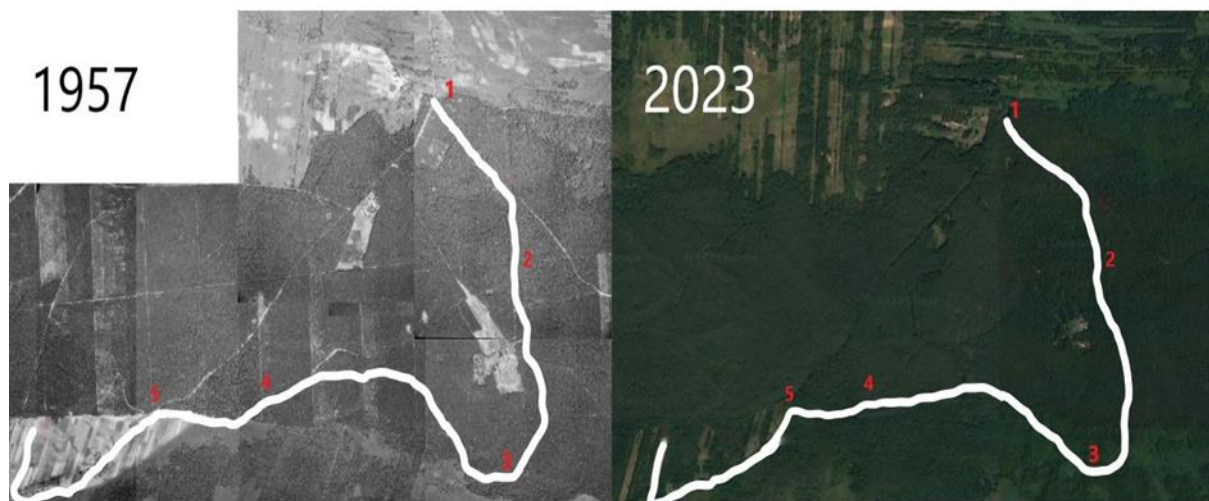


The European badger (*Meles meles*)



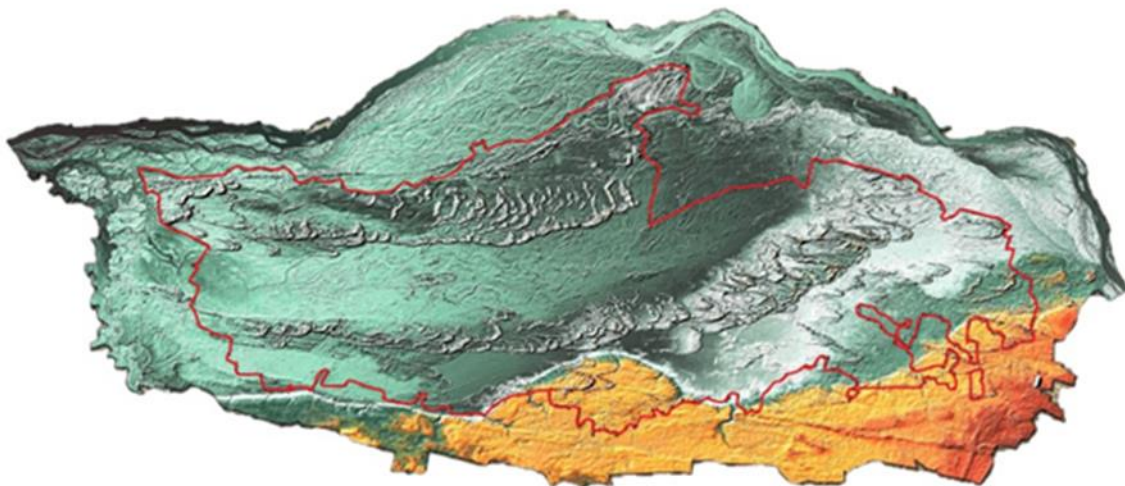
Wolf	Fox	Badger	Elk	Red deer	Roe deer	Wild boar





5. count fallen and broken large trees in sight section 4-5

6. mark on the map sections of the trail leading through the wetlands areas

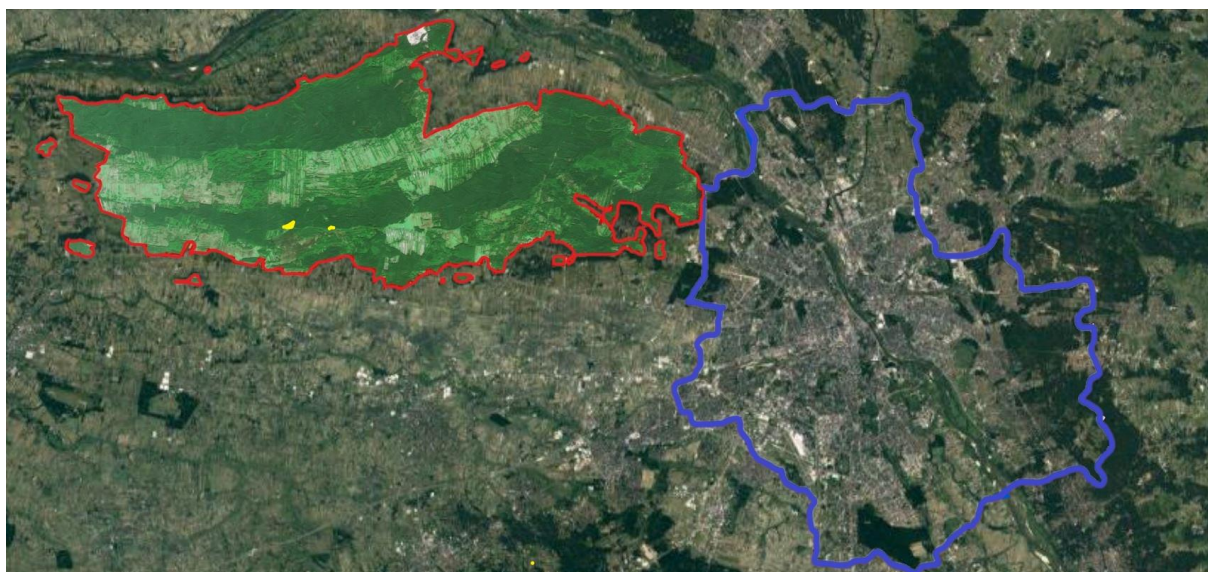


Group 5

1. complete the information given on the route by the guide - please do not use google☺



2. take 5 photos of each habitat in the strict protection area Zamczysko and Nart (yellow zones on the map).



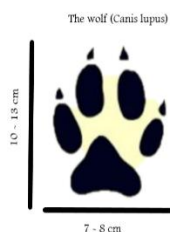
3. try to find this plant while staying on the trail

*Spinulum annotinum* known as interrupted club-moss or stiff clubmoss. It occurs throughout Poland, but is quite a rare plant. In recent years, the number of sites where it occurs has been decreasing. Placed on the Polish red list in the NT category (near threatened). It grows mainly in moist forests, in places overgrown with mosses.

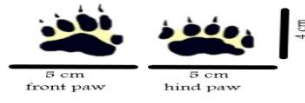
Task: find this plant, take a photo of the habitat and mark the location on the map.



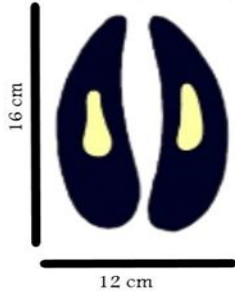
4. observations some animal tracks mark and put on the map



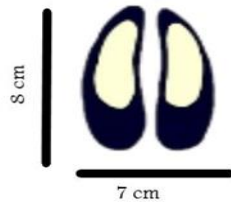
The European badger (*Meles meles*)



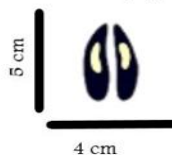
The elk (*Alces alces*)



The red deer (*Cervus elaphus*)



Roe deer (*Capreolus*)

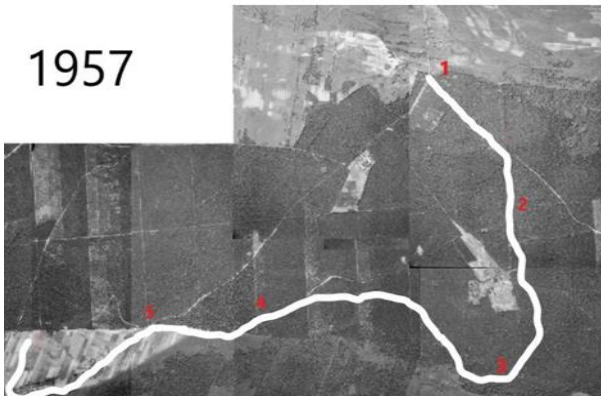


The wild boar (*Sus scrofa*)



Wolf	Fox	Badger	Elk	Red deer	Roe deer	Wild boar

1957



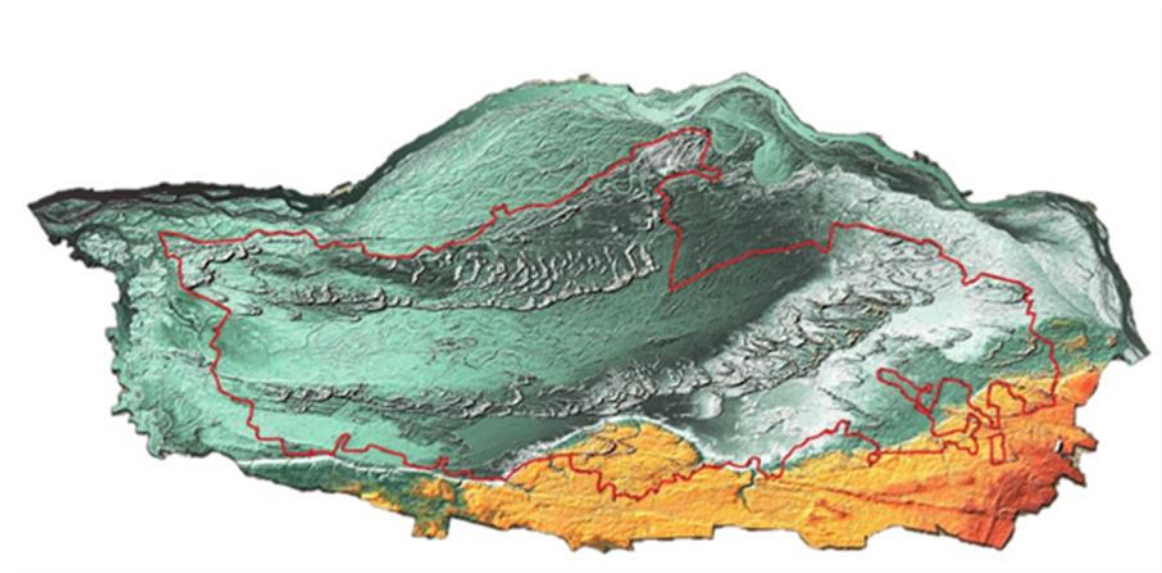
2023



5. measure 30 trees and calculate the average of their circumference - section 5 to the finish



6. on the basis of observations during the walk, mark on the map the areas where swamp and dune habitats meet



By Konrad Drzewiecki