

```
// C++ code
```

```
//
```

```
int potVal;
```

```
void setup()
```

```
{
```

```
  pinMode(A0, INPUT);
```

```
  Serial.begin(9600);
```

```
}
```

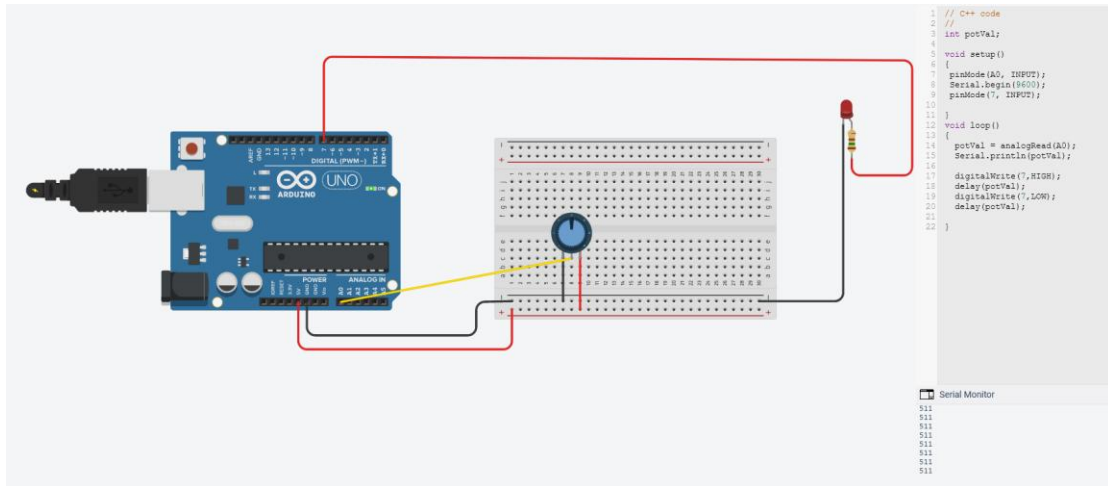
```
void loop()
```

```
{
```

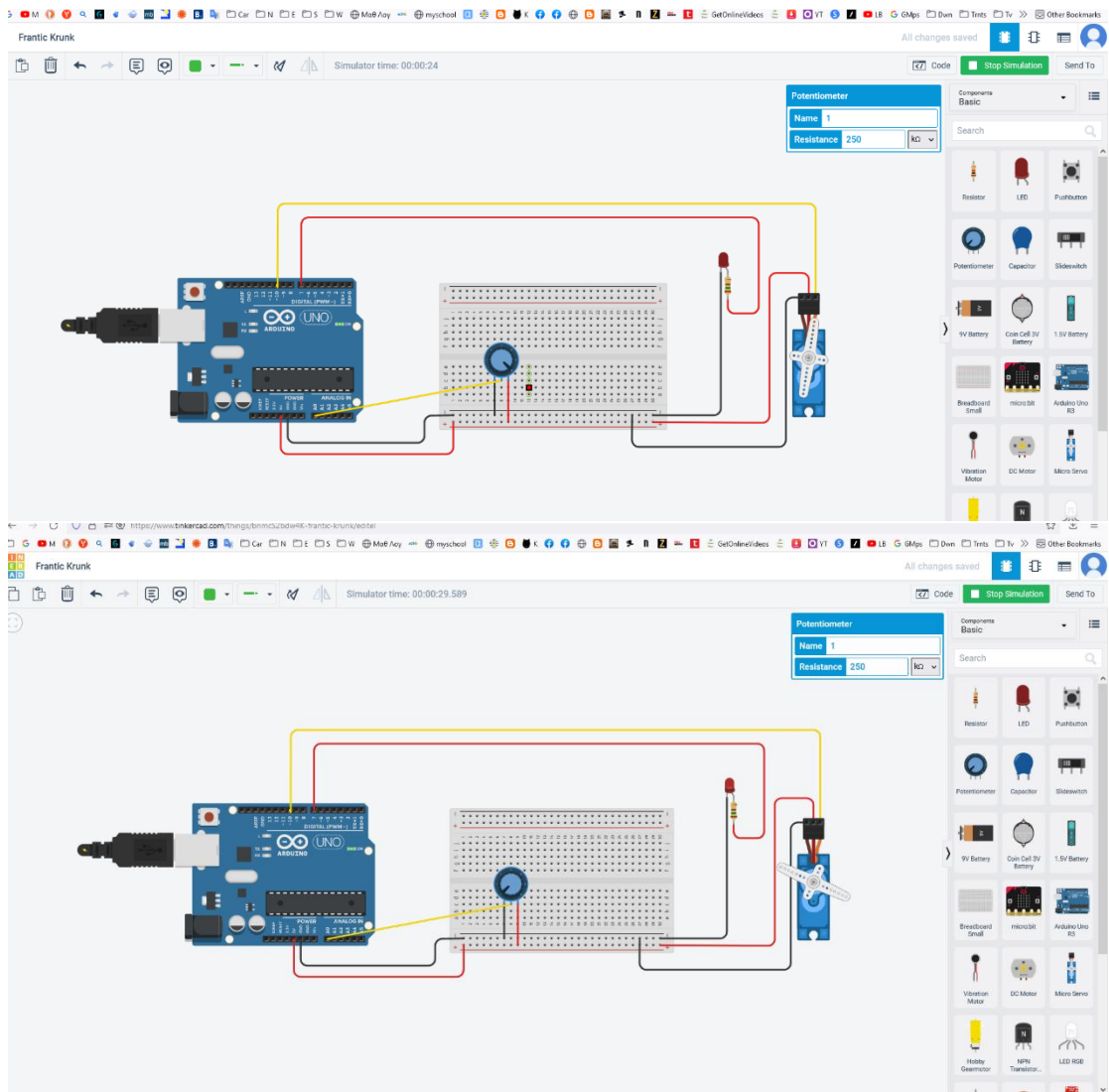
```
  potVal = analogRead(A0);
```

```
  Serial.println(potVal);
```

```
}
```



```
// C++ code
//
int potVal;
void setup()
{
  pinMode(A0, INPUT);
  Serial.begin(9600);
  pinMode(7, INPUT);
}
void loop()
{
  potVal = analogRead(A0);
  Serial.println(potVal);
  digitalWrite(7,HIGH);
  delay(potVal);
  digitalWrite(7,LOW);
  delay(potVal);
}
```



```
// C++ code
//
#include <Servo.h>
Servo myservo;
int potVal;
int moires;
void setup()
{
  pinMode(A0, INPUT);
  Serial.begin(9600);
  pinMode(7, OUTPUT);
```

```
pinMode(10, OUTPUT);  
myservo.attach(10) ;  
}  
void loop()  
{  
  potVal = analogRead(A0);  
  moires = map(potVal,0,1023,0,180);  
  myservo.write(moires);  
  Serial.println(moires);  
  digitalWrite(7,HIGH);  
  delay(potVal);  
  digitalWrite(7,LOW);  
  delay(potVal);  
}
```