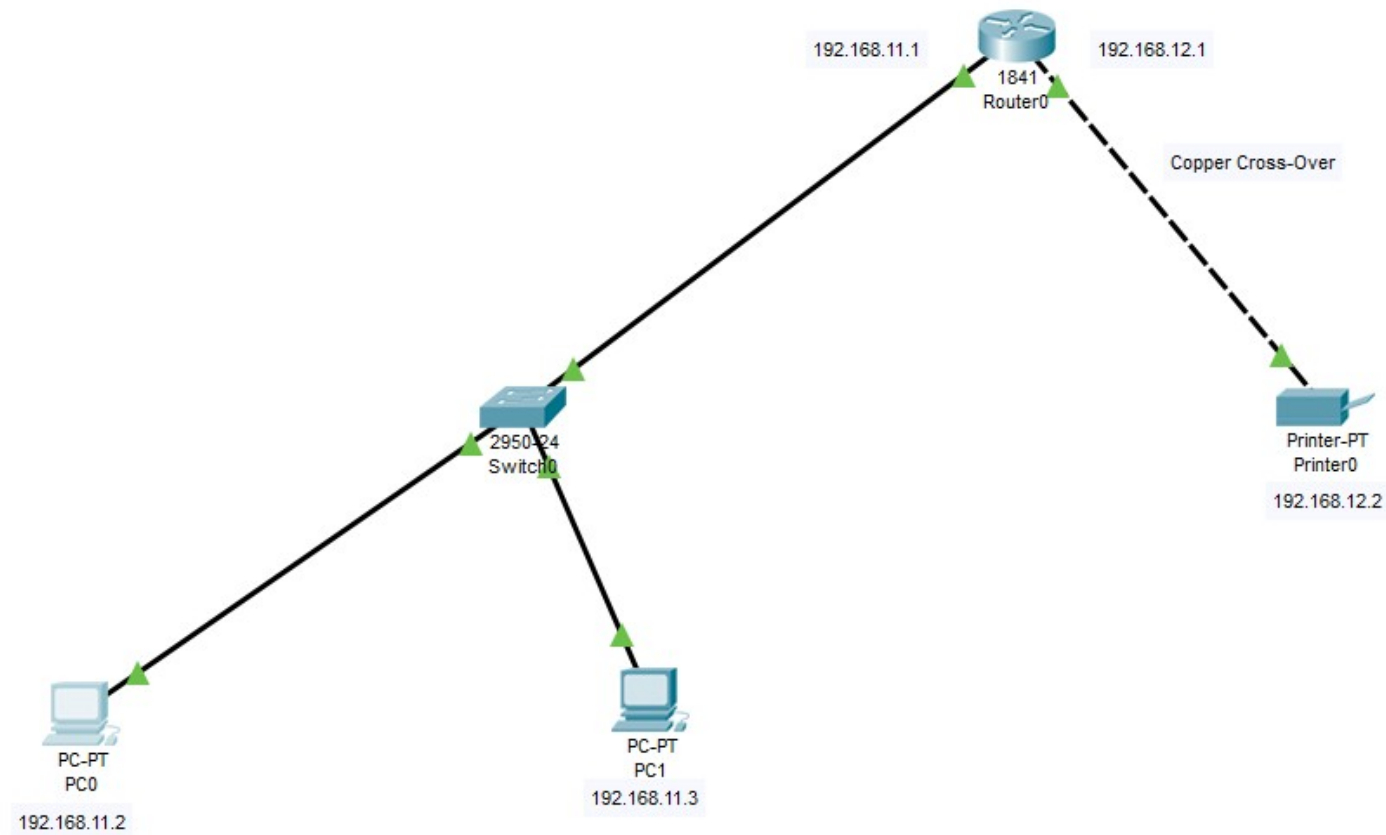


Share a printer.



Printer0

Physical **Config** Attributes

GLOBAL

Settings

INTERFACE

Global Settings

Display Name

Gateway/DNS IPv4

☐ DHCP

☒ Static

Gateway

DNS Server

Gateway/DNS IPv6

☐ DHCP

☐ Auto Config

☒ Static

IPv6 Gateway

IPv6 DNS Server

☐ Top

Printer0

Physical **Config** Attributes

GLOBAL

Settings

INTERFACE

FastEthernet0

FastEthernet0

Port Status ☒ On

Bandwidth ☒ 100 Mbps ☐ 10 Mbps ☒ Auto

Duplex ☐ Half Duplex ☒ Full Duplex ☒ Auto

MAC Address

IP Configuration

☐ DHCP

☒ Static

IP Address

Subnet Mask

IPv6 Configuration

☐ DHCP

☐ Auto Config

☒ Static

IPv6 Address

Link Local Address:

☐ Top

Router0

Physical

Config

CLI

Attributes

GLOBAL

Settings

Algorithm Settings

ROUTING

Static

RIP

SWITCHING

VLAN Database

INTERFACE

FastEthernet0/0

FastEthernet0/1

Static Routes

Network

192.168.11.0

Mask

255.255.255.0

Next Hop

192.168.12.0

Add

Network Address

192.168.11.0/24 via 192.168.12.0

Remove

Equivalent IOS Commands

Enter configuration commands, one per line. End with CNTL/Z.

Router(config)#

Router(config)#

%SYS-5-CONFIG_I: Configured from console by console

Router(config)#

Router(config)#

Top