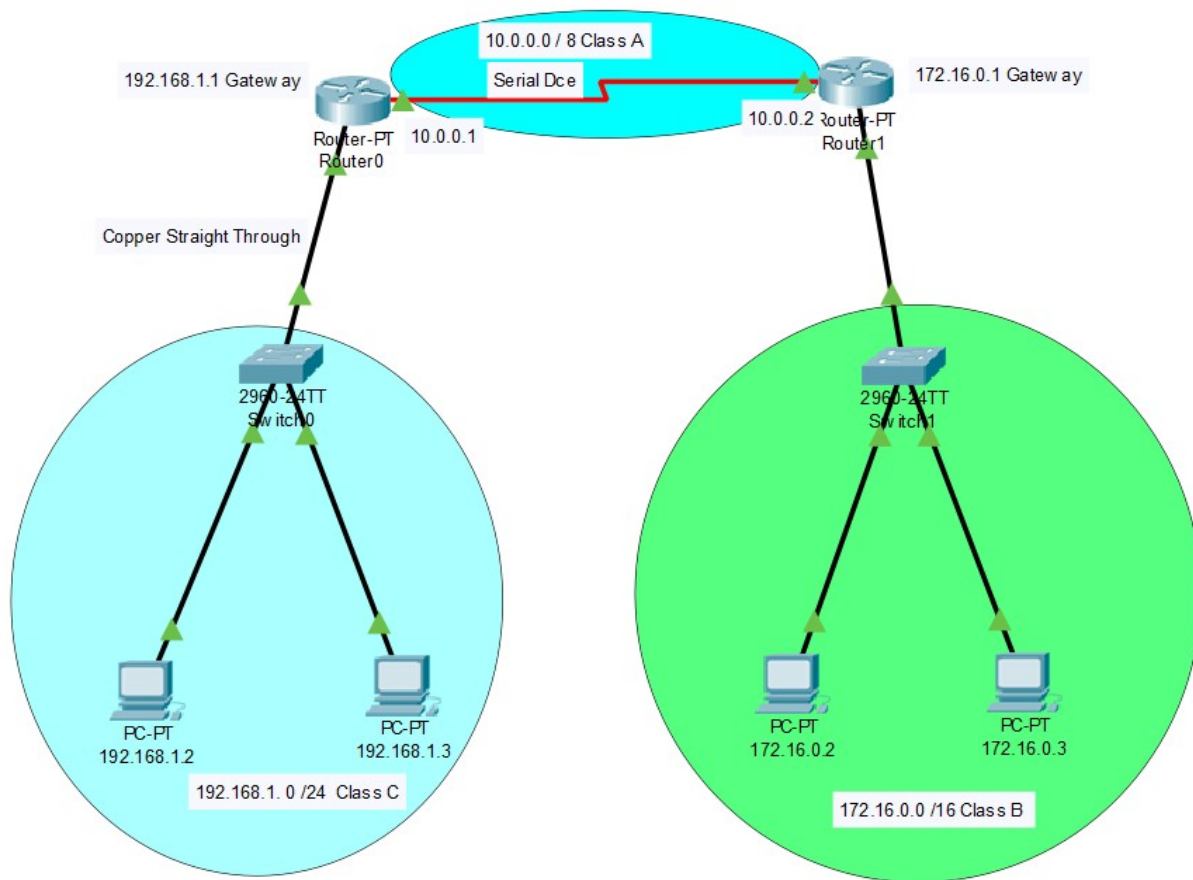


ΧΡΗΣΗ ΣΤΑΤΙΚΗΣ ΔΡΟΜΟΛΟΓΗΣΗΣ



ΧΡΗΣΗ ΣΤΑΤΙΚΗΣ ΔΡΟΜΟΛΟΓΗΣΗΣ ΜΕ ΕΝΤΟΛΗ CLI COMMAND ΣΤΟΝ ROUTER0:

```
enable  
configure terminal  
ip route 172.16.0.0 255.255.0.0 serial2/0  
do show ip route
```

ΚΑΙ ΣΤΟΝ ROUTER1

```
enable  
configure terminal  
ip route 192.168.0.0 255.255.0.0 serial2/0  
do show ip route
```

Ρύθμιση των ips στον router 0 σε command line:

```
Router>enable
Router#
Router#configure terminal
Enter configuration commands, one per line. End with CNTL/Z.
Router(config)#interface FastEthernet0/0
Router(config-if)#ip address 192.168.1.1 255.255.255.0
Router(config-if)#ip address 192.168.1.1 255.255.255.0
Router(config-if)#no shutdown
Router(config-if)#
%LINK-5-CHANGED: Interface FastEthernet0/0, changed state to up

%LINEPROTO-5-UPDOWN: Line protocol on Interface FastEthernet0/0, changed state to
up

Router(config-if)#exit
Router(config)#interface Serial2/0
Router(config-if)#ip address 10.0.0.1 255.0.0.0
Router(config-if)#ip address 10.0.0.1 255.0.0.0
Router(config-if)#no shutdown
Router(config-if)#clock rate 250000
Router(config-if)#
```

Ρύθμιση των ips στον router 1 σε command line:

```
Router>enable
Router#
Router#configure terminal
Enter configuration commands, one per line. End with CNTL/Z.
Router(config)#interface FastEthernet0/0
Router(config-if)#ip address 172.16.0.1 255.255.0.0
Router(config-if)#ip address 172.16.0.1 255.255.0.0
Router(config-if)#no shutdown
Router(config-if)#
%LINK-5-CHANGED: Interface FastEthernet0/0, changed state to up

%LINEPROTO-5-UPDOWN: Line protocol on Interface FastEthernet0/0, changed state to
up

Router(config-if)#exit
Router(config)#interface Serial2/0
Router(config-if)#ip address 10.0.0.2 255.0.0.0
Router(config-if)#ip address 10.0.0.2 255.0.0.0
Router(config-if)#no shutdown
Router(config-if)#
%LINK-5-CHANGED: Interface Serial2/0, changed state to up

%LINEPROTO-5-UPDOWN: Line protocol on Interface Serial2/0, changed state to up
```