



„I see, I explore, I create! ”

Artists with disabilities: **Eşref Armağan** (blind painter), **Florin Anghel** (mouth painter), **Sheri Caldwell** (painter with feet), **Tommy Hollenstein** (artist who paints with the wheels of the cart)

Eşref Armağan (born in 1953) is a blind painter of Turkish origin.

Born in 1953 blind in a poor family, he taught himself to write and paint.

Armagan is married and has two children.

He lives in Ankara with his wife, who is also visually impaired.



Using a braille stylus to etch the outline of his drawing, Armağan needs total silence to create art. The oil paint is then applied with the fingers and allowed to dry completely before a new color is applied. This method is used so that colors do not bleed. The artworks themselves are created without the help of any individual.



“I never took a class because painting was a tool for me to see the world, to perceive visual reality through my fingertips. This was the only motivation behind my work”, says the artist.



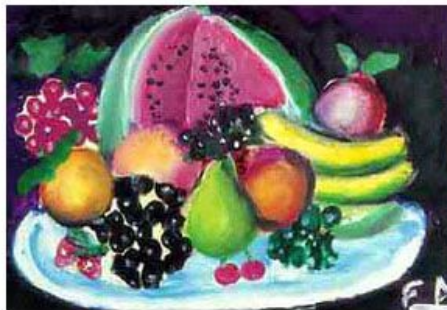
In 2009, Armağan was invited by Volvo to paint the new S60 model as part of a social media campaign. The resulting painting of the S60 sold on eBay for \$3,050.

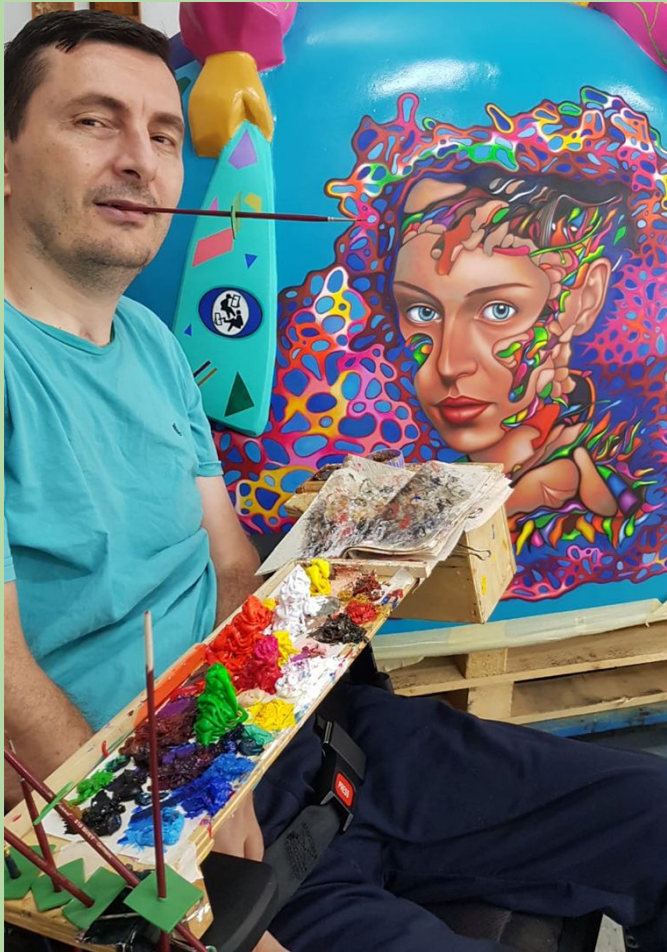


https://www.google.com/search?q=Volco+s60+painting+by+E%C5%9Fref+Arma%C4%9Fan&rlz=1C1GCEA_enRO988RO988&oq=Volco+s60+painting+by+E%C5%9Fref+Arma%C4%9Fan&gs_lcrp=EgZjaHJv_bWUyBggAEEUYOTIGCAEORRg80gEJMTIxNmowajE1qAIAA&sourceid=chrome&ie=UTF-8#fpstate=ive&vld=cid:f92b6889_vid:-cmKsWpkRGE,st:0









Florin Anghel was born on February 9, 1981 in Bucharest, the capital of Romania.

He is married and has a son.

In 2004, he suffered a gunshot wound that fractured his spine.

After a period spent at the rehabilitation center for quadriplegics in Toledo (Spain), in 2005, he was admitted to the care center for the disabled near Madrid.

In this care center he had access to painting workshops, where he started to create simple paintings in 2005.

<https://www.youtube.com/watch?v=VE7QsWezKfs>

The continued progress of his mouth painting skills allowed him to produce his own creations with themes he found in photographs. Meanwhile, the artist paints subjects given by nature, especially people and wild animals.





This allowed him to participate in national painting competitions and exhibitions. One of the paintings made with his mouth by Florin Anghel is a portrait of Rafael Nadal (the famous Spanish tennis player), which he personally handed to him at an exhibition.

Florin Anghel together with basketball player Pau Gasol (Spain)









Sheri Caldwell was born in Los Angeles, USA, in 1954. She died in the summer of 2023.

She had a girl and a boy. Sheri Caldwell lost the use of her arms at age 6 to polio and began painting with her feet at age 10.

After that, she became a professional artist. Sheri was the first person to receive a driver's license using her feet in the state of Nevada.



She managed to go to college. She moved to California, where she became known for her paintings.







Ozzy Osbourne - rock singer

<https://www.youtube.com/watch?v=IUxj2DzNutI>

Tommy Hollenstein

As a youngster, Hollenstein was an extreme sports enthusiast and enjoyed skateboarding, surfing and mountain biking.

In 1985, at age 24, he survived a mountain biking accident that left him a quadriplegic.



He started painting using,
not a brush, but the wheels of
his chair.

<https://tommyhollenstein.com/>



Hollenstein's works use house paints and pre-treated masonite boards. He puts paint on the wheels of his wheelchair and then uses the wheels to paint the boards, applying layers of color on top of each other over a period of time. The number of layers in a painting varies from three to fifty.



Some of Hollenstein's paintings feature visible tire tread patterns, and others use bald tires and other techniques that make it difficult to tell that the art was created with wheelchair tires. Hollenstein gives most of his finished paintings a one-word title that represents the subject of the painting.





It is time to focus on abilities not disabilities

The end