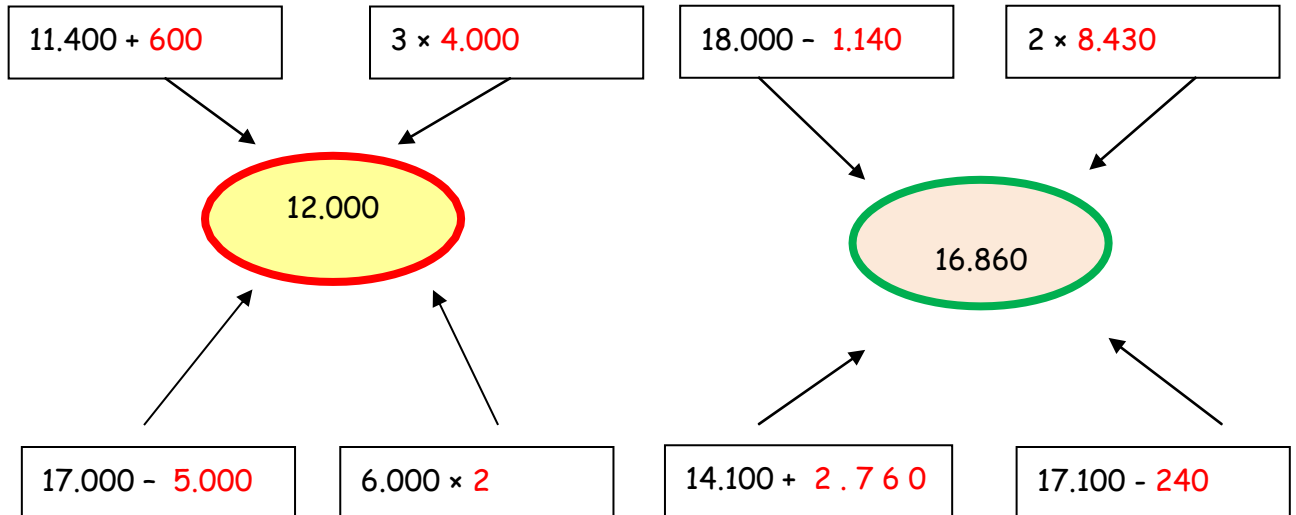


Εξάσκηση στο Κεφάλαιο 35



1. Ξτάνω στους αριθμούς στόχους.



2. Κάνω τις πράξεις όπως στο παράδειγμα.

• $12.840 + 573 = 12.840 + 500 + 70 + 3 = 13.340 + 70 + 3 = 13.410 + 3 = 13.413$

• $13.070 + 1.782 =$
 $13.070 + 1.000 + 700 + 80 + 2 = 14.070 + 700 + 80 + 2 = 14.770 + 80 + 2 = 14.850 + 2 = 14.852$

• $14.810 + 3.832 =$
 $14.810 + 3.000 + 800 + 30 + 2 = 17.810 + 800 + 30 + 2 = 18.610 + 30 + 2 = 18.640 + 2 = 18.642$

• $17.120 - 736 = 17.120 - 700 - 30 - 6 = 16.420 - 30 - 6 = 16.390 - 6 = 16.384$

• $14.780 - 1.296 =$
 $14.780 - 1.000 - 200 - 90 - 6 = 13.780 - 200 - 90 - 6 = 13.580 - 90 - 6 = 13.490 - 6 = 13.484$

• $16.240 - 3.367 =$
 $16.240 - 3.000 - 300 - 60 - 7 = 13.240 - 300 - 60 - 7 = 12.940 - 60 - 7 = 12.880 - 7 = 12.873$

• $18.430 - 2.765 =$
 $18.430 - 2.000 - 700 - 60 - 5 = 16.430 - 700 - 60 - 5 = 15.730 - 60 - 5 = 15.670 - 5 = 15.665$