



The Dream
(The Bed), 1940
- by Frida Kahlo

Biography:

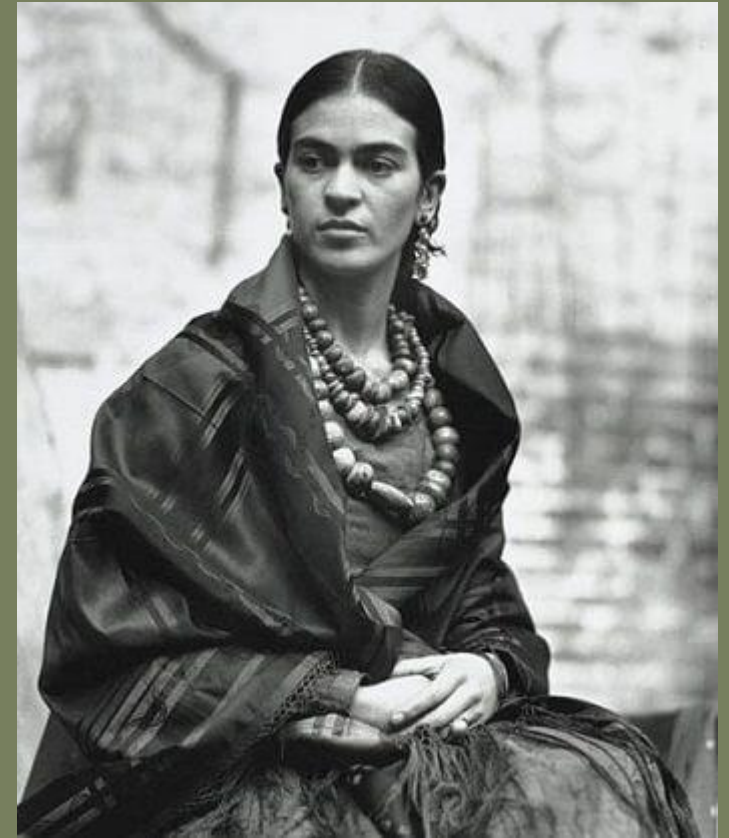
Considered one of Mexico's greatest artists, Frida Kahlo was born on July 6, 1907 in Coyocan, Mexico City, Mexico.

Frida Kahlo has poor health in her childhood. She contracted polio at the age of 6 and had to be bedridden for nine months. This disease caused her right leg and foot to grow much thinner than her left one

In 1925 Frida Kahlo was involved in a bus accident, which so seriously injured her that she had to undergo more than 30 medical operations in her lifetime. During her slow recovery, Kahlo taught herself to paint

On 13 July 1954 she unexpectedly died from pneumonia. Pulmonary embolism was diagnosed as the official cause of death

After Kahlo's death in 1954, Diego Rivera had redesigned Frida Kahlo's childhood home, La Casa Azul ("the Blue House"), in Coyocan, as a museum dedicated to her life. The Frida Kahlo Museum opened to the public in 1958, a year after Rivera's death.

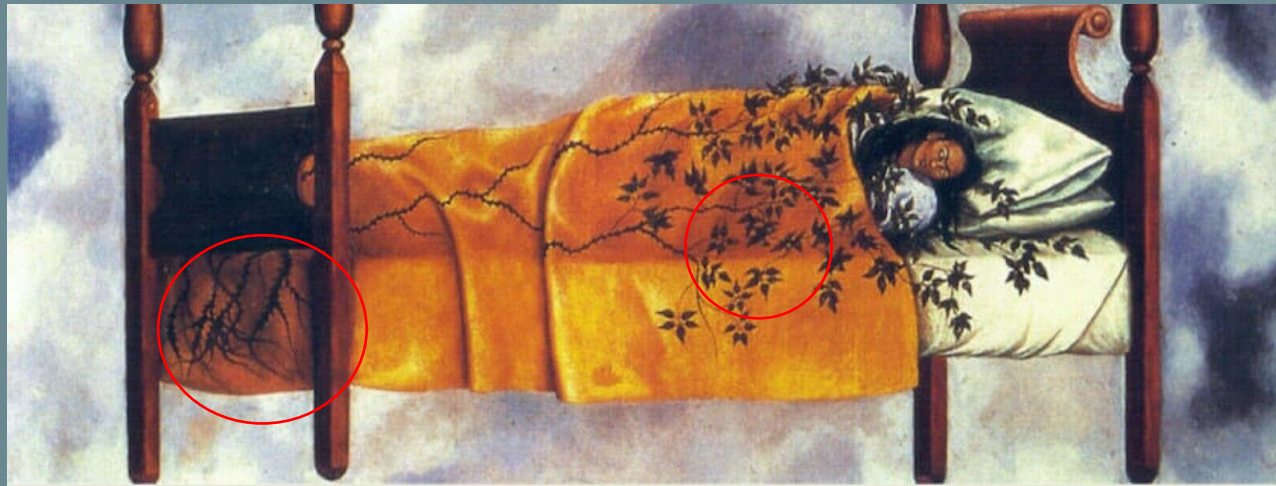
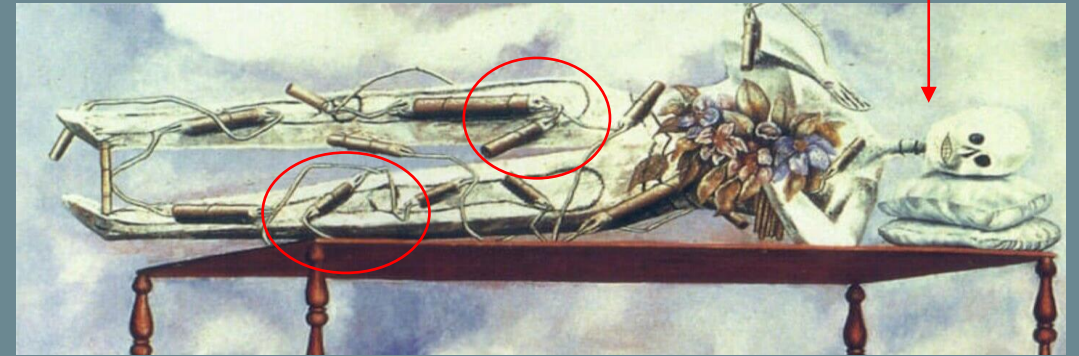


What it represents:

It represents both Frida and a skeleton lying on the bed on their sides with their heads two pillows. While Frida is in a sound sleep, the skeleton is awake and watching.

The skeleton is wired with explosives that can go off and explode at any time.

On Frida's body, green plants are a symbol of life and rebirth. The background clouds are light and airy and it seems the bed is floating in the sky.



What inspired her to create this painting:

The painting's tone is strongly linked to the Mexican culture, which was her background.

Unlike in many other countries in the world, in Mexico, death is not something to be mourned but celebrated with the dead with the "Day of the Dead" festival. As in Mexican, death, and life are intricately tied together.



Meaning:

In this painting, Frida expressed her feeling and interception of death.

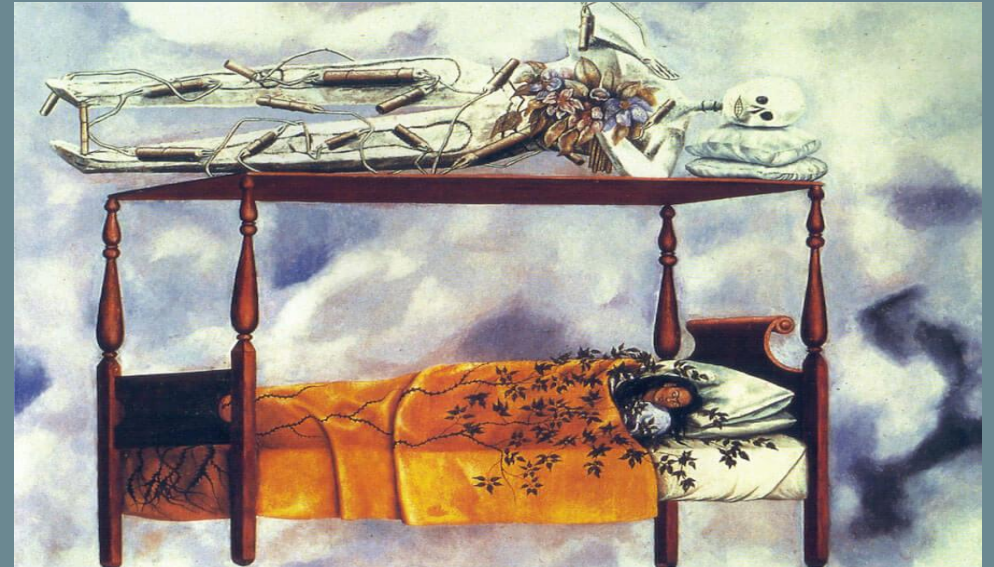
In real life, Frida has a skeleton on the canopy of her bed. And she believes that it's an amusing reminder of people's mortality.

The skeleton holds a bouquet and is wired with explosives to signify Judas which represents the act of destroying all negative energies.

The notable thing is that this bed is symbolic to Frida because essential things, such as conception, birth and death, occurs in a bed and for Frida, an ever-present reality because it is where she was kept as a child, teenager and woman. Additionally, she started her painting career from a bed.

The clouds in this painting, on the other hand, symbolizes Frida dreaming. Else, they could symbolize heaven. The wired explosives indicate death, while the vines denote life.

According to most opinions and reviews, this drawing also signifies Kahlo injuries and illnesses.



Sources:

[Courtesy of www.FridaKahlo.org](http://www.FridaKahlo.org)

<https://www.kahlo.org/dream-or-bed/>

<https://www.britannica.com/biography/Frida-Kahlo>