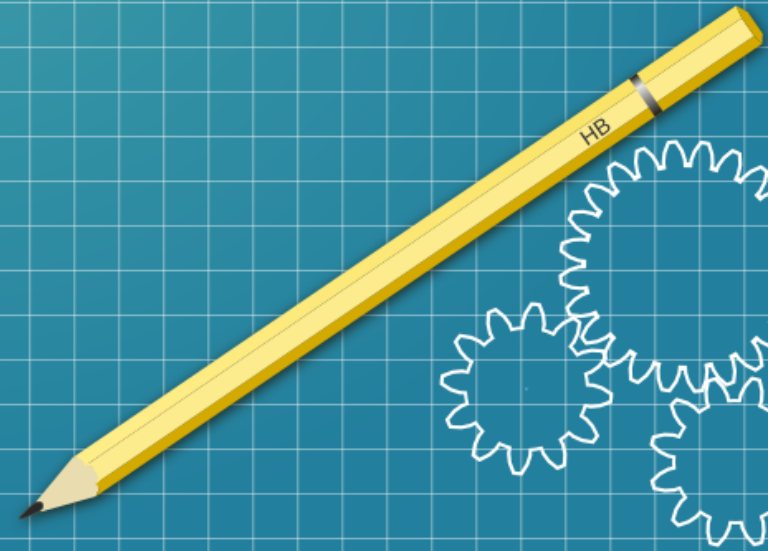
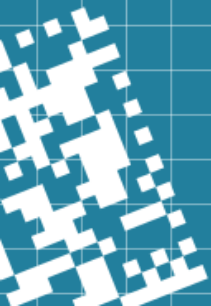
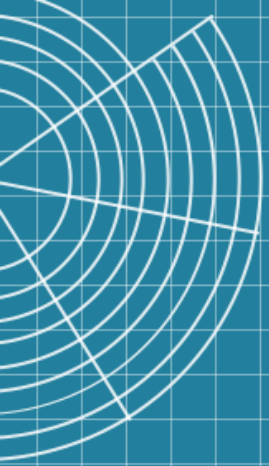
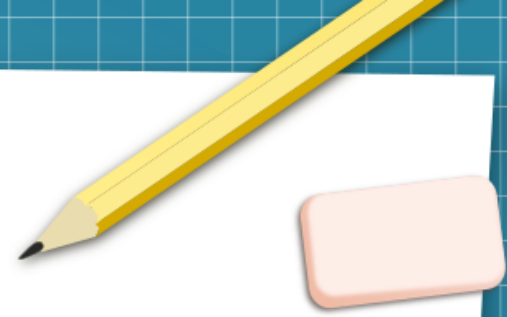
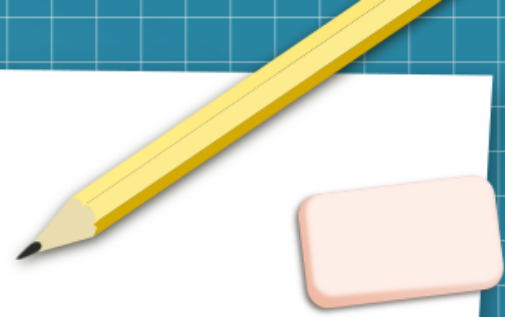


The Birth of Venus

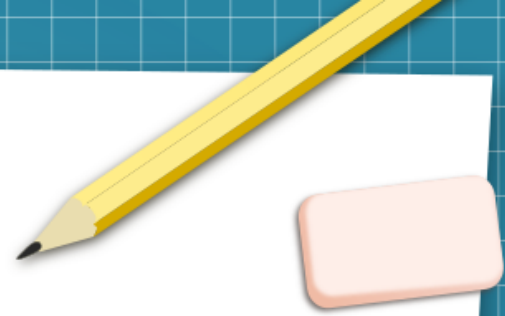




Boticelli painting dates back to 1485-1486.It's type is tempera on canvas.It has a height of 173.5 and weidth of 278.5.It is located in Florence at the Uffizi museum



Today it is in the collection of the Uffizi Museum in Florence in the hall dedicated to the great creaction

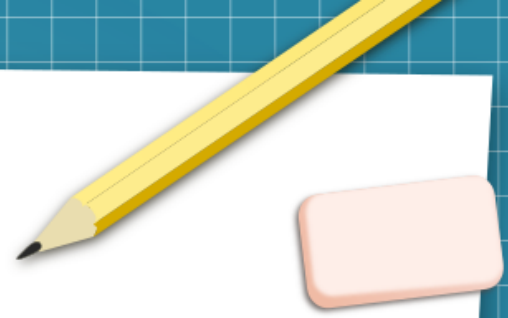


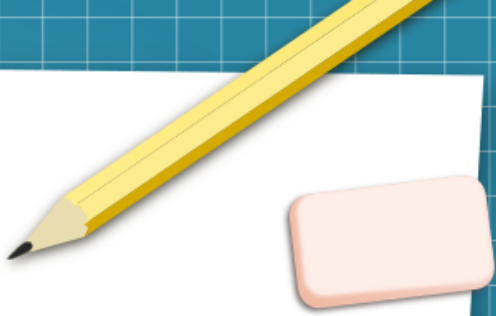
Inspiration: from the mythological narrative of the Oud and constitutes a neoplastic allegory based on the perception of love as a generative force

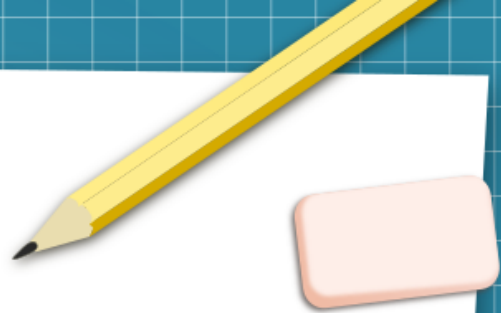
A yellow pencil and a pink eraser are positioned in the top right corner of the white paper background.

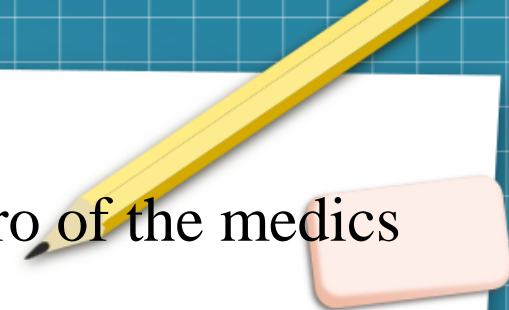
- Is one of the most aesthetically pleasing creations
of the Florentine artist

-It is not known who ordered this painting from the
ideal artist, but it is probably that it was made for a
member of the medical family



- 
- What does the table depict?
 - According to an ancient legend, Saturn, after taking the kingdom from his father Uranus, cut off his genetic organs and threw them into the sea.
 - Then the goddess Aphrodite emerged from the foam of the sea, near Cyprus in a shell blown by Zephyr and Aura, where one of the deities of the times was waiting for her to offer her a cloak



- 
- The painting is a hymn to the love of Giuliano di Piero of the Medici family for Simonetta during the new Renaissance who lived in Portovenere. Which was a seaside town which a local tradition says is the place where Aphrodite was born. Botticelli secretly loved Simonetta who was Lorenzo's mistress from the Medici family. Simonetta was a model for Aphrodite in the painting but also for other girls in Botticelli's work.

- PORT OF APHRODITE



www.shutterstock.com - 1276722289



- WIKIPEDIA
- KILLIS
- SHYTERSTORE



LINGS

THE END<3