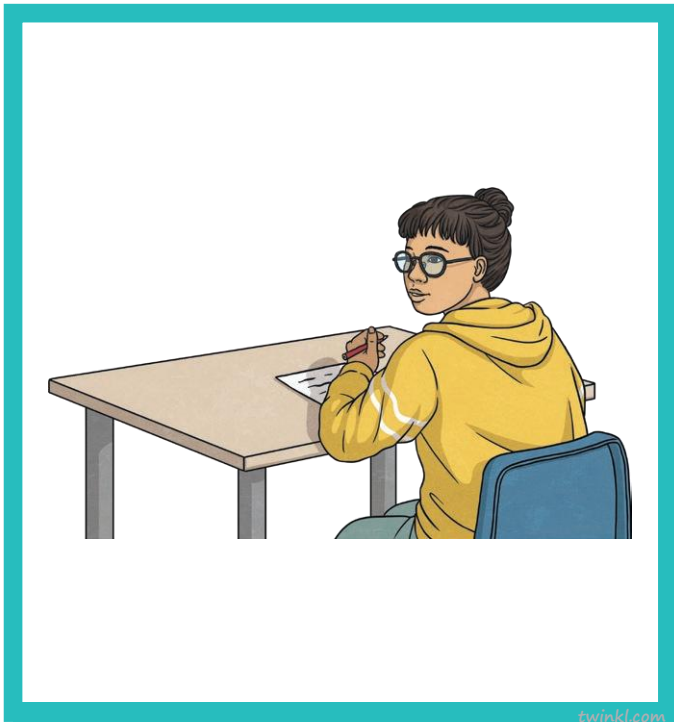
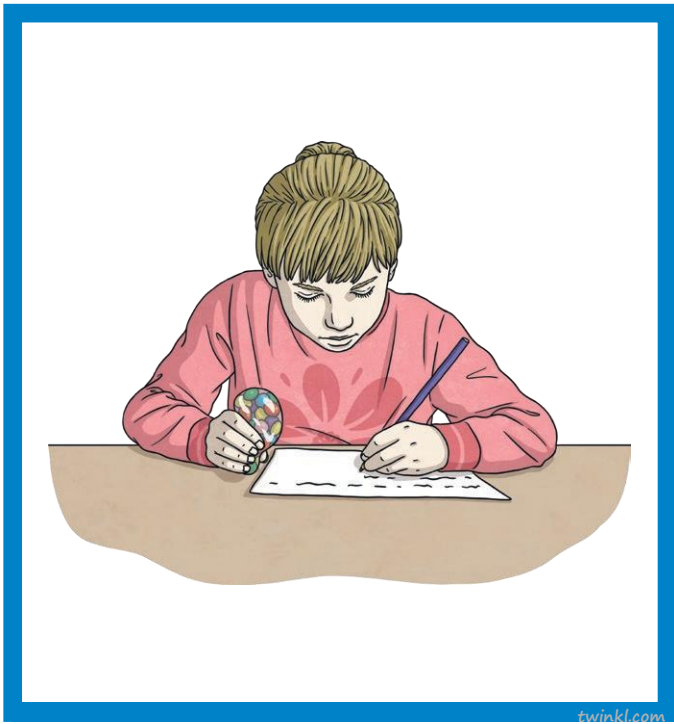
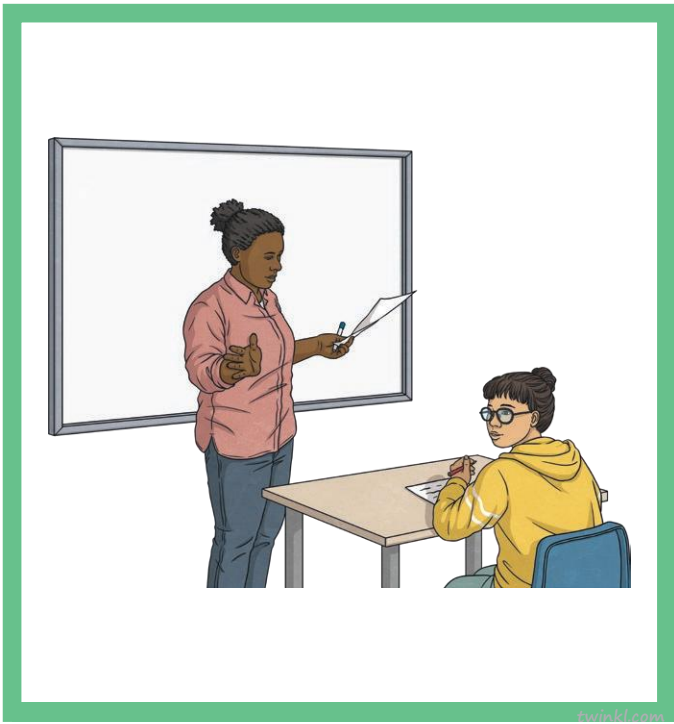
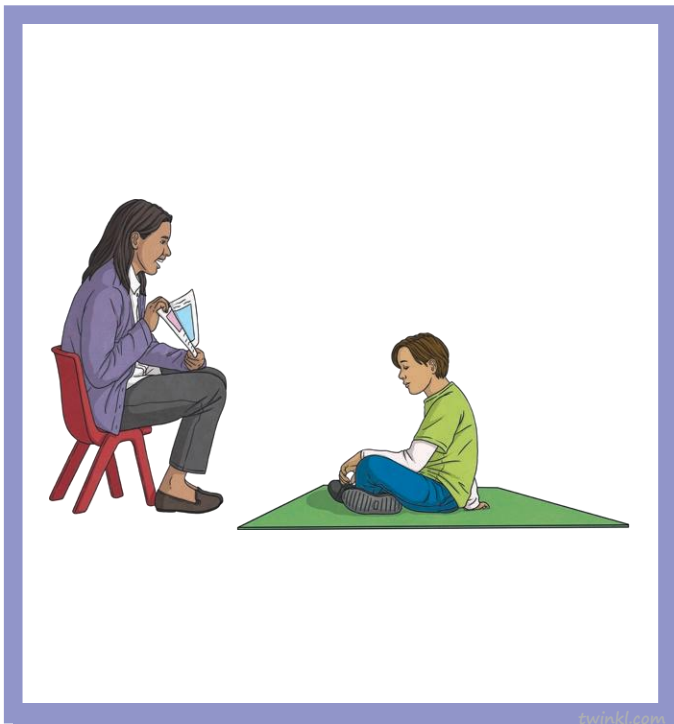
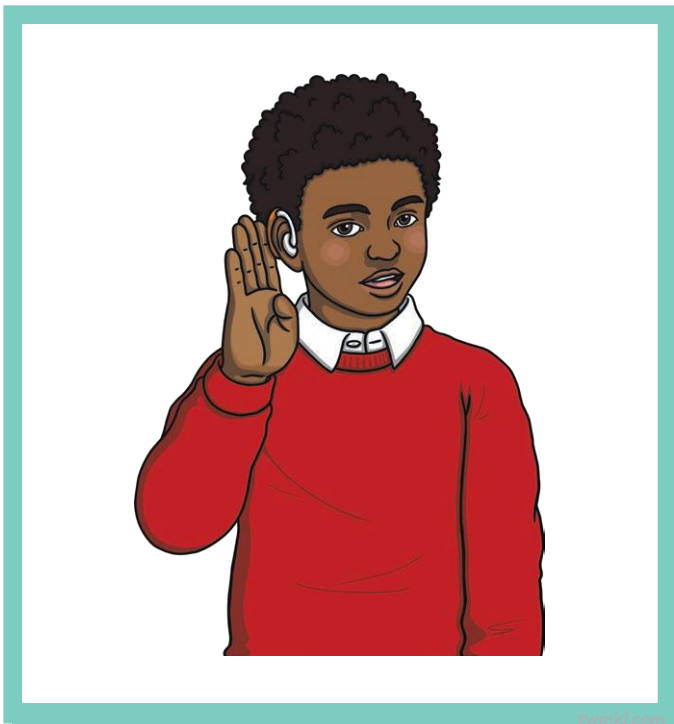
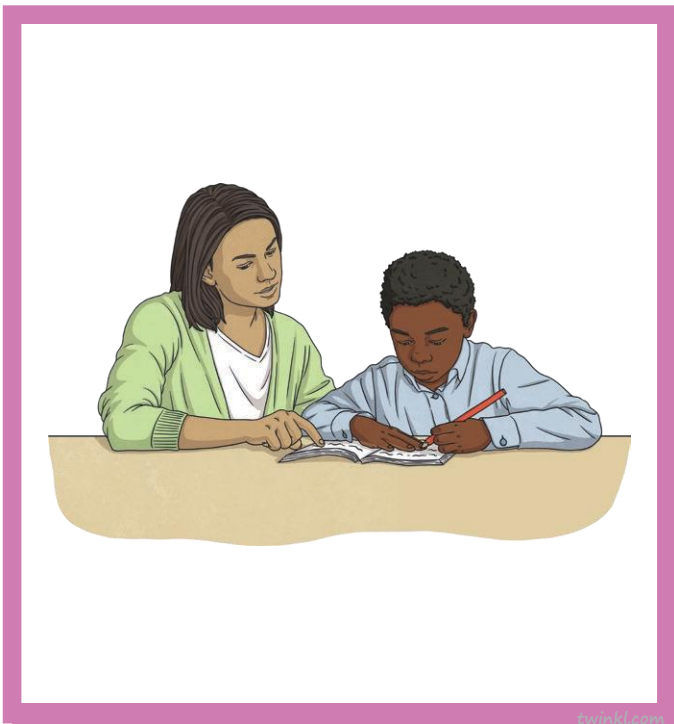
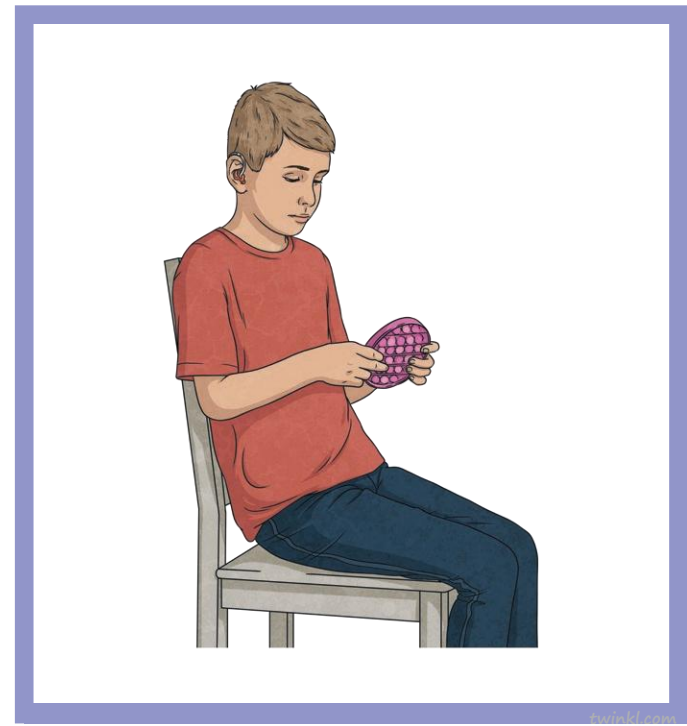
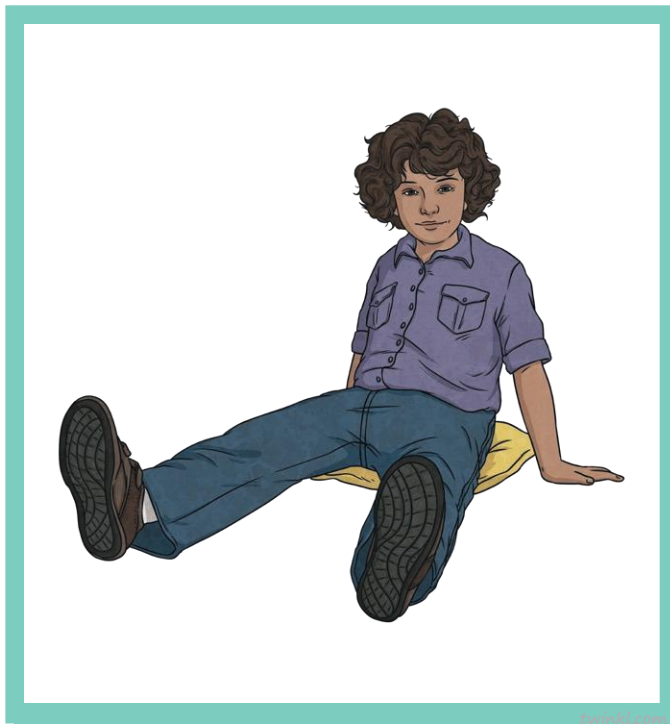


## ΑΝΤΙΔΡΑΣΕΙΣ ΠΟΥ ΔΕΙΣΧΝΟΥΝ ΟΤΙ ΑΚΟΥΩ ΤΟΝ ΣΥΝΟΜΙΛΗΤΗ ΜΟΥ

Κόψε και κόλλησε ΜΟΝΟ τις εικόνες που πιστεύεις ότι δείχνουν ότι είσαι καλός ακροατής.





Disclaimer: This resource has been created to be beneficial for educators supporting learners who use British Sign Language (BSL) and includes key sign illustrations which can differ from the BSL word order. This resource is provided for informational and educational purposes only and does not constitute professional advice. Twinkl is an international company and therefore some resources may feature signs which are appropriate to one geographical area but may be signed differently in other areas due to regional variations. Therefore, it is for you to use your judgement and your knowledge to consider the appropriateness of these resources for your context. It is worthwhile checking with a native BSL user for the most appropriate and widely used signs in your area.