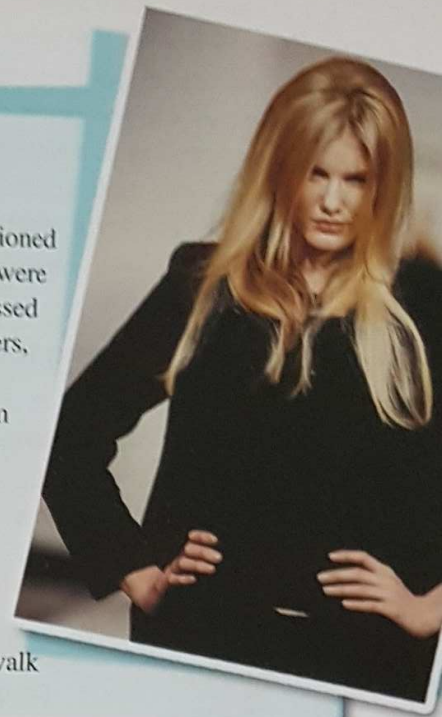


## Models-to-be

In a competition for 0) ..... models, four thousand girls between the ages of 16 and 24 were auditioned by a 1) ..... of three judges from top model agency Premier Model Management. Twenty-two were asked to return for a more 2) ..... vetting process. This involved catwalk training, being assessed without make-up and a personal interview. A further workshop week followed, involving make-overs, hair-styling and more catwalk training, after which the girls were finally whittled down to five.

The finalists will now 3) ..... three months of intensive training. Cameras will follow them around constantly, capturing the daily 4) ..... of castings, shoots and lessons from industry professionals. Also in 5) ..... for them are exhausting workouts at the gym, plus appointments with hairdressers, nutritionists, beauticians and specialist skin clinics.

Despite its glamorous image, the modelling world is tough and the finalists will certainly be 6) ..... through their paces. But though their lives may be all keep fit and carrot juice, the prize at the end is glittering – a year's modelling 7) ..... with Premier Model Management, an overseas photo shoot for the 8) ..... of Cosmopolitan magazine, and the chance to model on the catwalk at London Fashion Week.



- |               |            |            |              |
|---------------|------------|------------|--------------|
| 0 A aspiring  | B hopeful  | C wishful  | D expectant  |
| 1 A council   | B panel    | C meeting  | D range      |
| 2 A solid     | B exact    | C rigorous | D stable     |
| 3 A overcome  | B outlast  | C undergo  | D uphold     |
| 4 A grind     | B attempt  | C duty     | D labour     |
| 5 A stock     | B store    | C view     | D supply     |
| 6 A put       | B shown    | C pushed   | D thrown     |
| 7 A promotion | B contract | C treaty   | D settlement |
| 8 A lid       | B jacket   | C cover    | D sleeve     |

### Reading and Use of English – Part 4

#### Key word transformation

- 9 For questions 1-6, complete the second sentence so that it has a similar meaning to the first sentence, using the word given. Do not change the word given. You must use between three and six words.

- |  |  |
|--|--|
| 0 Orders will probably increase around Christmas time.<br>likely<br>Orders <i>are likely to</i> increase around Christmas time.              | 4 He said that he was the long-lost son of a millionaire shipping tycoon.<br>claimed<br>He ..... the long-lost son of a millionaire shipping tycoon. |
| 1 Graham has succeeded because of his original ideas.<br>due<br>Graham's success ..... his ideas are original.                               | 5 Jake turned up very late in the evening.<br>appearance<br>Jake ..... very late in the evening.   |
| 2 As there is no evidence, the police will have to let the suspect go.<br>lack<br>The police will have to let the suspect go ..... evidence. | 6 All things considered, James didn't do too badly in his A levels.<br>account<br>When ....., James didn't do too badly in his A levels.             |
| 3 Why don't we meet next Saturday afternoon?<br>getting<br>How ..... next Saturday afternoon?  |  |