



S T E Ming



With Monet and Friends



Who is Claude Monet...  
and why did we name  
our eTwinning program after him?



eTwinning

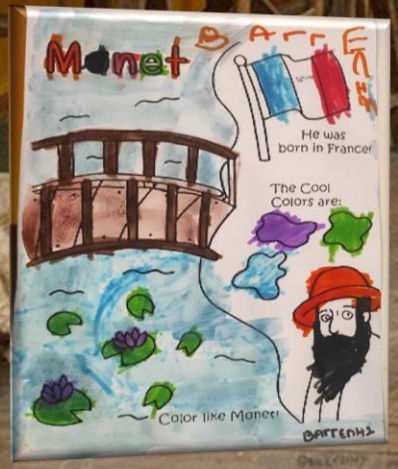


So without further ado  
we watched  
Videos and presentations  
about his life and work  
and tried to create  
our own Monet inspired art pieces





eTwinning

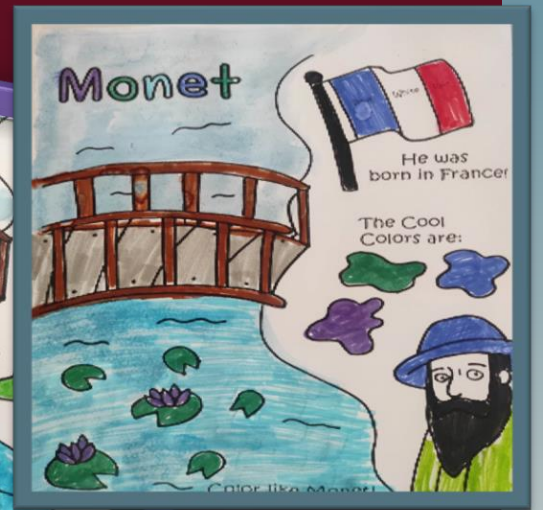
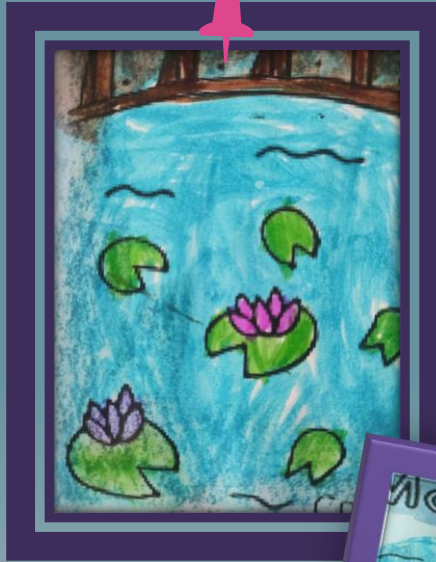


Water Lilies is not a name of a single painting, but a name of a series of works. During his lifetime, Claude Monet comes back to this subject matter several times, and painted more than 250 water lilies paintings.

---

Along with Starry Night by Vincent van Gogh, Water Lilies are the most iconic images of Impressionism.





Our Water Lilies are clearly inspired by Claude Monet's! We experimented with tempera paint on aquarelle paper to recreate a pond and recreate a pond and using paper towels in paint to recreate the water lilies!









eTwinning











S T E Ming  
With Monet and Friends









S T E Ming



With Monet and Friends

