

# Museum of Cycladic Art



[Click on me](#)

# Cycladic Art

In this work, our students capture exhibits of the Museum of Cycladic Art representative of Cycladic Culture, Ancient Greek Art and Cypriot Culture.

Figurines, vases and tools made of marble and clay shed light on the civilization that flourished in the 3rd millennium BC.

Source: <https://collections.cycladic.gr/en/collections/>

# Museum of Cycladic Art

## Cycladic Culture



Large female figurine of the canonical type. The head is long and ovoid, with distinctive clear and simple lyre-shaped outline. It is set on a cylindrical neck and tilts slightly backwards. The hands are folded on the belly and the fingers are not indicated.

# Museum of Cycladic Art

## Cycladic Culture



Jug of “White-Painted Ware” with round base, globular body, tubular neck with oblique spout, and small strap handle from neck to shoulder. The vase bears a painted brown and reddish-brown decoration with painted bands of crosshatched triangles alternating with horizontal lines.

# Museum of Cycladic Art

## Cycladic Culture



Pyxis (storage vessel) with a cylindrical body, a flat base, and a lid that projects slightly from the walls. The surface of the body and the lid of the vase have an incised decoration in the shape of a herringbone.

# Museum of Cycladic Art

## Ancient Greek Culture



Protome (bust) of a female figure with a Phrygian cap on her head. Under the cap, the hair frames the forehead with radial locks and falls in wavy curls on the shoulders. The face is oval with large almond-shaped eyes.

# Museum of Cycladic Art

## Ancient Greek Culture



Typical animal figurine of the Late Mycenaean period (14th-13th c. BC) representing a bull or other bovine. The figurine preserves traces of black stripes all over its body.

# Museum of Cycladic Art

## Ancient Greek Culture

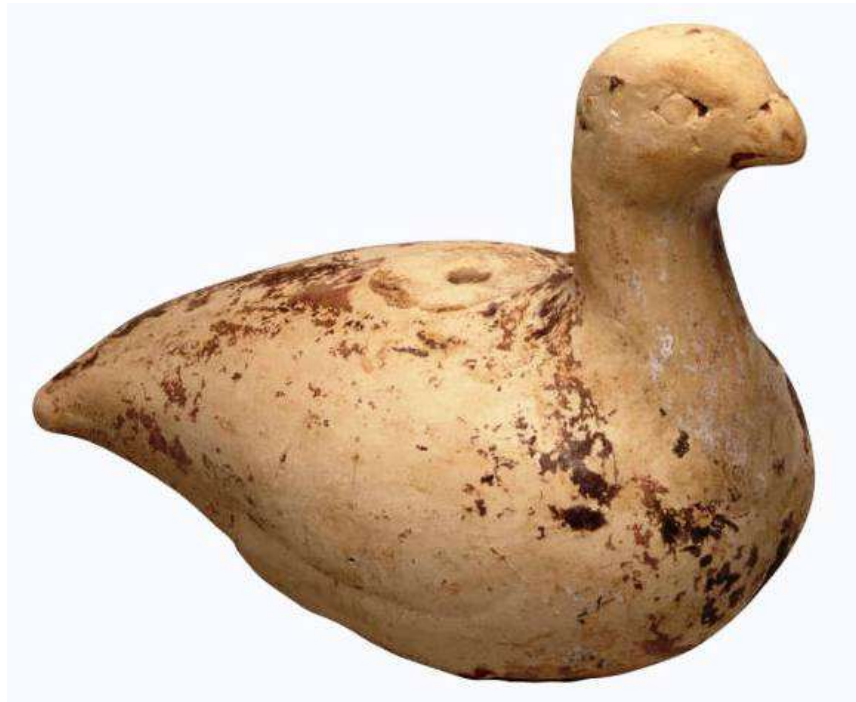


Boeotian handmade figurine of a horse with rider. The horse has conical legs, flattened tail, arched mane and cylindrical muzzle; the rider rests his cylindrical hands on the horse's mane.



# Museum of Cycladic Art

## Ancient Greek Culture



A figurine of a bird, probably a goose. Its features are rendered without details. On the lower part of the body the legs are in relief and the wings are divided from the body by a slight engraving. Traces of red colour are preserved on the beak and on the legs under the belly. The figurine may have been used as a vessel or as a figurine.

# Museum of Cycladic Art

## Ancient Greek Culture



Lamp with one handle and two thin grooves around the disc (central upper surface of the lamp), which is decorated with a relief representation of Eros with a lyre. Traces of burning are preserved on the nozzle. The lamp is mould-made.

# Museum of Cycladic Art

## Ancient Greek Culture



Corinthian exaleiptron (vessel for transporting liquids or aromatic oils). It has geometric decoration of red and brown colour. On the shoulder, there is a S-shaped motif between bands. Inside, it is covered with glaze (that took its colour after firing).

# Museum of Cycladic Art

## Ancient Greek Culture



Feeding bottle decorated with spirae around the spout, while glossy black glaze (varnish that turns black during firing) covers the rest of its surface.

# Museum of Cycladic Art

## Cypriot Culture



Twin-necked jug of the "Red Polished South Coast ware". The two long necks are connected to each other with horizontal bars. The vase is decorated with incised geometric motifs filled with a white substance (kaolin).

# Cooperation Team

## School Teachers:

Spyridoula Liatsou - Teacher

Petros Dounos - ICT Teacher

Christina Gkanteri - Teacher

Marirena Pagkaki - Social worker school teacher

Eleftheria Pateraki - Special support teacher

## Pupils:

Panagiotis

Vangelis

Spyros

Filippos

Antonis

Ioanna

Iasonas

Elena

Petros

Dimitra