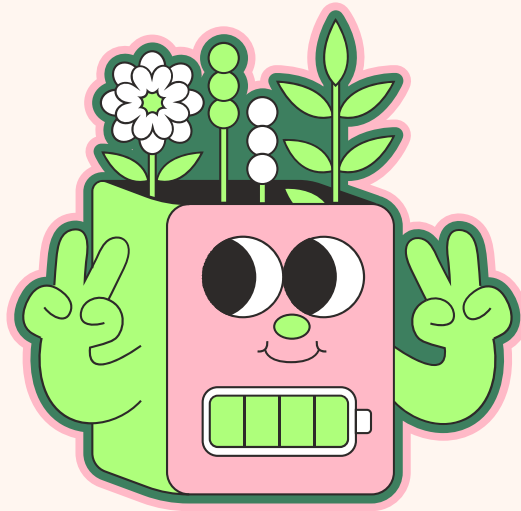


**Created by:**  
**1st Primary school**  
**of Agios Nikolaos,**  
**Greece**

**Institut Escola**  
**Joan Ardèvol**  
**Spain Catalunya**  
**Cambrils**



Reduce your  
consumption



**INCREASE THE GREENERY**  
**IN THE SCHOOL YARD**



COLLABORATIVE BROCHURE

**TIPS FOR**  
**ENERGY**  
**CONSERVATION**  
**AT SCHOOL**



**We ensure that  
recyclable  
materials are  
collected and sent  
for recycling.**



**WE ALWAYS TURN OFF  
THE LIGHTS AND  
SWITCH OFF THE  
DEVICES WHEN WE  
ARE NOT USING THEM.**



**WE CREATE ART,  
USING RECYCABLE  
MATERIALS**



**WE RECYCLE  
BATTERIES AND  
TEXTBOOKS.**

COLLABORATIVE BROCHURE

# TIPS FOR ENERGY CONSERVATION AT SCHOOL

**Created by:**

**1st Primary school of Agios Nikolaos, Greece  
Institut Escola Joan Ardèvol Cambrils, Spain**



# AVOID SINGLE USE PLASTIC

## WHY?

Because if we use plastics such as plastic bottles we will contaminate the world.

Plastic is a material that takes the longest to biodegrade.

Is better if you use:



lunch  
boxes



Water  
bottles



Boc'n'Roll





# PLANT TREES



**Trees produce oxygen  
and purify the air.**

**They help ecosystems.**



This is our  
biodiversity space

**TEAM NAMES: VICTORIA, AINA, ANTONIO,  
EVAELENA, DAVID.U**





We must save water because it is very important for humans, animals and plants and without it there would be no life.



SAVE  
WATER





# HOTEL INSECTS AND BIRD HOUSES

## WHY?

BECAUSE IF THE BEES DIED, WE WOULD BE LEFT WITHOUT HONEY. HONEY IS A NATURAL SWEETENER, IS USED AS AN ANTI-INFLAMMATORY, ANTIOXIDANT AND ANTIBIOTIC AGENT. IN ADDITION, BEES AND INSECTS POLLINATE, IT MEANS THAT THEY PLACE POLLEN ON OTHER FLOWERS, WHICH ALLOWS US TO FEED AND BREATHE.





## **REDUCE ENERGY CONSUMPTION**

**Our impact on climate change is reduced. Many scientists believe that excessive energy consumption contributes considerably to global warming.**

