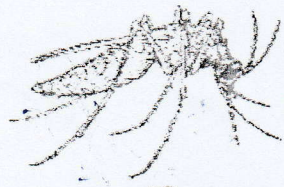


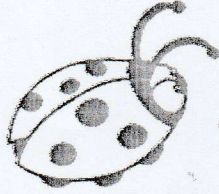
Όνομα..... Ημερομηνία...../...../.....



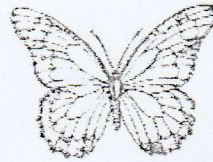
ΚΟΥΝΟΥΤΙ



ΜΕΛΙΣΣΑ



ΠΑΣΧΑΛΙΤΣΑ



ΠΕΤΑΛΟΥΔΑ

A crossword puzzle grid is shown with four insects and arrows indicating the starting points for the words:

- A butterfly (πέταλούδα) is at the top, with a downward arrow pointing to the start of a vertical word.
- A ladybug (πασχαλίτσα) is on the left, with a rightward arrow pointing to the start of a horizontal word.
- A bee (μέλισσα) is on the left, with a rightward arrow pointing to the start of a horizontal word.
- A mosquito (κουνούτι) is on the left, with a rightward arrow pointing to the start of a horizontal word.

© - childrenblogspot.com